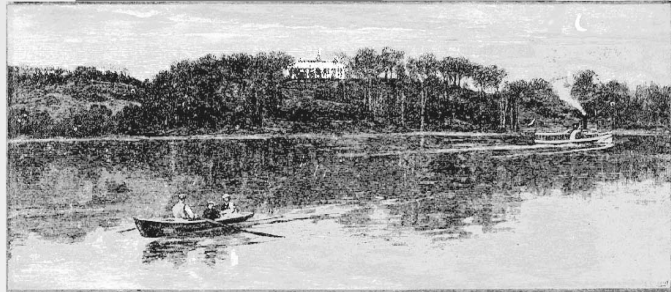


**63RD ANNUAL  
POTOMAC VALLEY TOURNAMENT  
August 7-10, 2008**



*Take a  
SUMMER  
HOLIDAY  
in the  
POTOMAC  
VALLEY!*



*Don't miss the  
2:30pm Saturday Panel Show!*

*There are events throughout the tournament for players of all levels including a full schedule of intermediate and novice games. Enjoy the usual famous Washington hospitality from Nadine and Kitty including free lunches on the weekend.*

*For the complete schedule, see page 3.*

B

♣

U

♥

L

♠

L

♦

E

♥

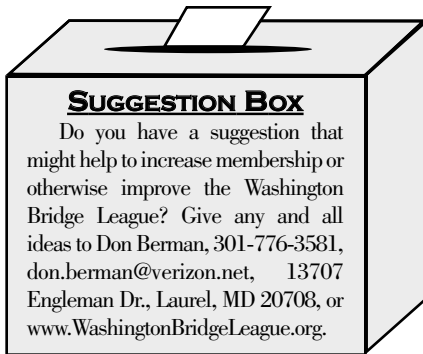
T

♣

I

♠

N



**WBL OMBUDSMAN**  
 Any player with helpful director issues including criticism or praise of the directing staff may contact the Ombudsman, Ann Lindley and be assured that the source of the information will remain confidential. Information should be provided in writing and may be handed to her at any game, or mailed to her at 8822 Fircrest Pl., Alexandria, VA 22308.

◆◆◆◆ ~~~~~ ◆◆◆◆  
**DEADLINE: AUGUST 8, 2008**  
 TO SUBMIT NEW ARTICLES TO THE EDITOR FOR THE SEPTEMBER/OCTOBER 2008 ISSUE

**Washington Bridge League BULLETIN** (usps #861-240)  
 VOL. 66, #4 — SUBSCRIPTION \$2 PER YEAR FOR MEMBERS OF UNIT #147 (INCLUDED IN ACBL ANNUAL DUES). NON-MEMBER SUBSCRIPTION RATE IS \$21 FOR THREE YEARS. PUBLISHED BI-MONTHLY BY THE WASHINGTON BRIDGE LEAGUE AT 14517 PERRYWOOD DRIVE, BURTONSVILLE, MD 20866. SECOND-CLASS POSTAGE PAID AT BURTONSVILLE, MD. POSTMASTER: SEND ADDRESS CHANGES TO WASHINGTON BRIDGE LEAGUE BULLETIN, ACBL, 2990 AIRWAYS BLVD., MEMPHIS, TN 38116-3847. ALL EDITORIAL AND GENERAL CORRESPONDENCE SHOULD BE DIRECTED TO THE EDITOR AT 901 CLIFTONBROOK LN., SILVER SPRING, MD 20905-3711.

Editor — Donna Rogall (301-421-9615), drogall@verizon.net  
 I/N Columnist — Sandy Forsythe, majs1f@aol.com  
 Columnists — Steve Robinson, Richard Colker, Fred King, Ted Ying, Barry Bragin  
*The opinions expressed by our columnists do not necessarily reflect the opinion of the ACBL, the WBL, or even the editors of this publication. The WBL is not responsible for the claims of its advertisers.*

Fred King, *President* — (703-536-1914), fredmking@gmail.com  
 Don Berman, *Vice President* — (301-776-3581), don.berman@verizon.net  
 Steve Robinson, *Treasurer* — (703-379-4371), robinswr@erols.com  
 Richard Ferrin, *Secretary* — (202-265-0718), rferrin@hunton.com

**UNIT DIRECTORS**  
 Carole Banks — (301-622-0923), cy.banks@verizon.net  
 Ellen Cherniavsky — (301-649-1350), eachernia@yahoo.com  
 James Geist — (301-675-6070), wwwjfg@yahoo.com  
 Clyde Kruskal — (301-927-1023), kfam@bellatlantic.net  
 Linda Marshall — (301-320-6057), ldajmarshall@msn.com  
 Ellen Rosenthal — (301-299-9298), nealandellen@cs.com

**SOME KEY VOLUNTEERS**  
 Nadine Wood — *Tournament Chair* (301-565-9555)  
 Ann Lindley — *WBL Ombudsman* (703-360-9087)  
 Frances Burke — *Membership Secretary* (301-384-6103)  
 Ted Ying — *Unit Game Chief Director* (301-490-3154)  
 Michael Carroad — *Unit Game Manager* (301-322-4289)  
 Barbara Doran — *Unit Game & Tournament Partnerships* (301-608-0347)  
 Kitty Gottfried — *Unit Game and Sectional Hospitality* (301-587-3981)  
 Dick Wegman, *Past President* — (301-365-2228), aliweg@aol.com

WBL WEBSITE: www.WashingtonBridgeLeague.org  
 DISTRICT 6 SITE: www.districtsix.org

---

**CONTENTS**

---

ARTICLE	PAGE
President's Letter .....	2
Call for Nominations for the Machlin Trophy for Sportsmanship .....	2
63rd Annual Potomac Valley Tournament — August 7-10, 2008 .....	3
78th Annual D.C. Championships — October 2-5, 2008 .....	4
Bits and Pieces...	
Bridge in Schools; Masterpoint Race Winners —Corrections; Summer 2008 Drop In Bridge Classes!; .....	5
Welcome to the Washington Bridge League; Saturday 0-200 Game & Mini-Lesson .....	27
WBL Solvers' Club .....	7
Thursday Night Unit Game...	
2008 Trophy Race Standings .....	14
0-20 Game & Lesson Thursday Nights, Carpools .....	14
Schedule, WBL Cell Phone, Map, <b>Guaranteed Partner Program</b> , ..	15
The Unit Game; Spare Brains or Muscle?; Upcoming Sectionals .....	16
Committee Action #62 .....	17
NVBA Fall Sectional Tournament — October 23-26, 2008 .....	19
The Gadget-Matist .....	21
Seeking Mentors and Mentees for WBL 0-300	
Mentor Program .....	23
WBL Board & Member Responsibilities: May 2008 - May 2009 .....	25
NLMasterPointers .....	28
Stepping Up to New Heights; <b>New Saturday 0-200 Game &amp; Mini-Lesson</b> ..	29
Need a Partner or a Ride to the Unit Game? .....	back cover
Solvers' Club's New Problems .....	back cover

## PRESIDENT'S LETTER

by WBL President, Fred King

It is summer, and just as the television networks are filled with re-runs, I want to bring up again a couple of ideas that I have discussed before. The first of these has to do with "the atmosphere" at the unit game. I have noticed over the last few months there has been a slight, but noticeable, decline in attendance at the game. If you have any ideas about why this and what we can do about it, please speak to or email me or any member of the board. The only way we can learn about your concerns is through communication from you. I have heard, again, from some people that they don't find the game as friendly as they would like. I think it is up to everyone to find the proper balance between competition and sociability. At the same time, if you feel that someone's actions or behavior is inappropriate, please call the director right away. They will do what they can to rectify any problems that may have occurred and let us know if there is a pattern of problems. Don't say or do nothing, stew about it all night (which will certainly have a bad effect on your game and also likely your partner's and future opponents' enjoyment) and then complain to people about the game or worse, stop coming. We cannot deal with problems we don't know about. If the problems are caused by the staff, then you can take your concerns, in private, to our ombudsman—Ann Lindley. She will be sure that I and the rest of the board learn about them and we will take action to deal with them. So please, speak up—your input is vital to our success.

A pet peeve of mine is one which I see as a major cause of slow play and ethical problems. You cannot play or bid until it is your turn, but you can, and indeed should, think before it is your turn. A headache for everyone from partners to directors to committees is dealing with hesitations during the auction. One way to cut down significantly on this problem is to think ahead. Of course, sometimes auctions take very strange turns and you have to stop and try to figure out what is going on. But if your partner opens 1♠ and you raise to 2♠, plan ahead as to what you are going to do if partner makes a game invitation. Don't "go into the tank" when partner bids 2NT or 3 of a new suit as if you had never heard of such a thing. If you make your decision in tempo, you eliminate the danger of conveying unauthorized information by how quickly or slowly you bid. Similarly, if dummy hits with J4 of a suit in which you hold K96, it is better to decide if you are going to cover long before declarer leads the J (and you know he is going to do so!) and not give away your holding by your hesitation. I am always surprised when declarer, who has taken an appropriate amount of time before playing, leads a trump and his opponent, who is void, suddenly sits up and starts thinking about what to discard. How could he have been expected to know that declarers often draw trumps?

I hope you all have a good summer and we'll see you at the August sectional.

Cheers, Fred King

### CALL FOR NOMINATIONS FOR THE MACHLIN TROPHY FOR SPORTSMANSHIP

Do you know an actively ethical, gracious player who deserves recognition? Please send your suggested candidate with two or three sentences why you think your nominee is a good candidate for the award to Fred King at [fredmking@gmail.com](mailto:fredmking@gmail.com) or in person at the unit game or during the August Sectional. We would like to hear from you by September 1, 2008.

## SILVER SPRING, MD: AUGUST 7-10, 2008

Take a Summer Holiday in the Potomac Valley!



Washington Bridge League's  
**63<sup>rd</sup> Annual Potomac Valley Tournament**

### THURSDAY, AUGUST 7

- ♣ StrataFlighted Open Pairs (A/X unlim/3000, B/C/D Separate 1500/1000/500) (both sites); Stratified NLM Pairs (NLM/100/50) & 0-20 Pairs (Christ the King Church only); Stratified 199er Pairs (Beth El only)
  - Beth El Congregation, 3830 Seminary Rd, Alexandria** ..... 7:00pm
  - Christ the King Church, 2301 Colston Drive, Silver Spring** ..... 7:30pm
- Capital Beltway to Connecticut Ave. South. Left on East-West Hwy. Right on Grubb Rd. 1<sup>st</sup> left on Colston. Church is on the left before the next intersection.

Friday—at Christ the King Church Only

### FRIDAY, AUGUST 8

- ♦ Stratified Pairs (unlim/2000/500) ..... 10:00am
  - ♥ StrataFlighted A/X (unlim/3000) & B/C/D (1500/1000/500) Pairs ..... 2:00pm
  - ♠ **IMP Pairs** StrataFlighted A/X (unlim/3000) & B/C/D (1500/1000/500) ..... 7:30pm
- The Friday Night IMPs are back!** Friday nights are your chance to try a different form of the game. With IMP pairs, you only need one partner, but it scores like a team game. Your result on each board will be IMPed against all the other results from your direction, then averaged for your final score.
- ♣ Intermediate/Novice Pairs (300/200/100/50/20) (single sessions) ..... 10:00am, 2:00pm, 7:30pm

### ◇ SAT. & SUN. ONLY at the Margaret Schweinhaut Senior Center ♥

1000 Forest Glen Road, Silver Spring, MD: From Beltway exit Georgia Avenue north (toward Wheaton). Turn right at first traffic light onto Forest Glen Rd. The Senior Center is .7 mile on your right.

### SATURDAY, AUGUST 9

- ♣ **NEW! Compact KOs** Four rounds of knockouts finish in one day! ..... 11:00am, 3:30 pm
- Tired of pair games?** You're guaranteed to play a full session of two rounds of the knockouts.
- ♣ Stratified Pairs (unlim/2000/500) (single session) ..... 11:00am
- ♥ StrataFlighted A/X (unlim/3000) & B/C/D Pairs (1500/1000/500) (single session) ..... 3:30pm
- ♦ Intermediate/Novice Pairs (300/200/100) (single sessions) ..... 11:00am, 3:30pm
- ♠ Newcomer Pairs (50/20/5) (single sessions) ..... 11:00am, 3:30pm
- ♣ Don't miss the between sessions **Panel Show** ..... 2:30pm

### SUNDAY, AUGUST 10

- ♦ A/X Board-A-Match Teams, (unlim /3000, 2 session playthru w/short break) ..... 11:00am & TBA
- ♥ B/C/D Swiss Teams, VPs (2000/1000/500, 7 round playthru w/short break) ..... 11:00am & TBA
- ♠ 300/100/50 Swiss Teams, VPs (single sessions) ..... 11:00am, 3:00pm

### ♣ Full Schedule of Intermediate and Novice Events ♥

1/N events: 0-5, 20, 50, 100, 200, 300; Stratification at Director's Discretion.



Famous Washington Hospitality includes snacks, drinks and Friday, Saturday and Sunday lunch free of charge. Chair: **Nadine Wood**, 301-565-9555, [woodthere@comcast.net](mailto:woodthere@comcast.net). Volunteer Coordinator: **Barbara Summers**, 301-598-5838, [jimbarb1184@aol.com](mailto:jimbarb1184@aol.com) Hospitality: **Kitty Gottfried**, 301-587-3981, [kgottfried@hotmail.com](mailto:kgottfried@hotmail.com) Partnerships: **Barbara Doran**, 301-608-0347, [SectionalPartner@DistrictSix.org](mailto:SectionalPartner@DistrictSix.org) or try the easy **Online Partnership Bulletin Board**: [www.WashingtonBridgeLeague.org](http://www.WashingtonBridgeLeague.org)

SILVER SPRING, MD: OCTOBER 2-5, 2008



COME TO AN  
**Octoberfest  
OF Bridge!**

Washington  
**Bridge  
League**

**78<sup>th</sup>  
Annual  
D.C.  
Championships**

THURSDAY, OCTOBER 2

- ♣ Strataflighted Open Pairs (A/X unlim/3000, B/C/D Separate 1500/1000/500) (both sites); Stratified NLM Pairs (NLM/100/50) & 0-20 Pairs (Christ the King Church only); Stratified 199er Pairs (Beth El only)
  - Beth El Congregation, 3830 Seminary Rd, Alexandria** .....7:00pm
  - Christ the King Church, 2301 Colston Drive, Silver Spring** .....7:30pm
- Capital Beltway to Connecticut Ave. South. Left on East-West Hwy. Right on Grubb Rd. <sup>1st</sup>Left on Colston. Church is on the left before the next intersection.

**Friday—at Christ  
the King Church Only**

FRIDAY, OCTOBER 3

- ♦ Stratified Pairs (unlim/2000/500) .....10:00am
- ♥ Strataflighted A/X (unlim/3000) & B/C/D (1500/1000/500) Pairs ..... 2:00pm
- ♣ **Ye Olde Stratified Pairs, Beer & Bratwurst** (unlim/2000/500) ..... 7:30pm
- ♣ Intermediate/Novice Pairs (300/200/100/50/20) (single sessions) .....10:00am, 2:00pm, 7:30pm


◇ **SAT. & SUN. ONLY** at the **Margaret Schweinhaut Senior Center** ♥

1000 Forest Glen Road, Silver Spring, MD: From Beltway exit Georgia Avenue north (toward Wheaton). Turn right at first traffic light onto Forest Glen Rd. The Senior Center is .7 mile on your right.

SATURDAY,  
OCTOBER 4

- ♦ Strataflighted A/X (unlim/3000) or B/C/D Pairs (1500/1000/500) (single sessions) ..11:00am, 3:30pm
- ♥ Intermediate/Novice Pairs (300/200/100) (single sessions) ..... 11:00am, 3:30pm
- ♣ Newcomer Pairs (50/20/5) (single sessions) .....11:00am, 3:30pm
- ♣ **Machlin Sportsmanship Award** Presentation & between sessions **Panel Show** 2:30pm

SUNDAY, OCTOBER 5

- ♦ **Eynon Trophy**  First awarded in 1931—Try to add your name to the famous names inscribed here!
- A/X Swiss Teams, VPs (unlim /3000, 7 round playthru w/short break) .....11:00am & TBA
- ♥ B/C/D Swiss Teams, VPs (2000/1000/500, 7 round playthru w/short break) .....11:00am & TBA
- ♣ 300/100/50 Swiss Teams, VPs (single sessions) .....11:00am, 3:00pm
- ♣ **One Day Bridge Class:** 2 sections: *Start to Play* or *Advance Your Play* 10:30am - 3:30pm

♣ **Full Schedule of Intermediate and Novice Events** ♥

I/N events: 0-5, 20, 50, 100, 200, 300; Stratification at Director's Discretion.



Famous Washington Hospitality includes snacks, drinks and Friday, Saturday and Sunday lunch free of charge. Chair: **Nadine Wood**, 301-565-9555, woodthere@comcast.net. Volunteer Coordinator: **Barbara Summers**, 301-598-5838, jimbarb1184@aol.com Hospitality: **Kitty Gottfried**, 301-587-3981, kgottfried@hotmail.com Partnerships: **Barbara Doran**, 301-608-0347, Sectional Partner@DistrictSix.org or try the easy **Online Partnership Bulletin Board:** www.WashingtonBridgeLeague.org

## BITS AND PIECES

## BRIDGE IN SCHOOLS

With the school year ending, this is our chance to say thanks to all of you who have so generously given your time to teach bridge to eager young players. The kids proved to be bright and enthusiastic, and the teachers were impressed at how quickly they picked up the game. Most importantly, they had fun which was our main goal.

We ask that all WBL members acknowledge the teaching contributions made by **Barry Bragin, Steve Czecha, Carol Elfant, Donna Hankey-Woods, Suzi Kilczewski, Calvin Konner, Peter Lo, Jerry Pruzan, Mark Rosen, Robin Taylor, Roy Tibery and Jay Weinstein**, among others.

We initiated or continued programs at a number of Montgomery County Middle and High Schools, and will spend time this summer targeting additional schools. We have

been asked to start programs in the District of Columbia and Prince George's County. It is our hope and intention to spread bridge fever far and wide, but to do so we need many more volunteers to help us. So please contact Ellen Rosenthal ([nealandellen@cs.com](mailto:nealandellen@cs.com)) or myself ([shstringer@aol.com](mailto:shstringer@aol.com)) if you are able to assist in any way.

I offer a special tribute to **Ellen Rosenthal** for her leadership of the *Bridge in Schools* committee, and for her gentle but relentless pursuit of principals who would give our program a chance in their schools.

—Shawn Stringer

### SUMMER 2008 DROP IN BRIDGE CLASSES!!

with **Charlie Williams & Leslie Shafer**

[slamhand@verizon.net](mailto:slamhand@verizon.net)  
[www.bridgeteacher.com](http://www.bridgeteacher.com)  
301-977-0314

from Tuesday, June 24  
through Wednesday, August 27

\$20 per class. Student Game is \$10.

We are offering several summer classes this year! All of them are on a "drop in" basis (pay as you go) at \$20 per class. There will be morning, afternoon and evening "brush up bridge" for beginner, intermediate and advanced levels. Because everyone has so many scheduling conflicts during the summer, we will be going on a "drop in" basis for all of the classes. If you're in town and want to participate, then we invite you to attend. You don't have to notify us in advance, just show up!

#### Who Will Your Teacher Be?

Leslie and Charlie will alternate classrooms every week.

Location: **United Methodist Church's Activity Center**, 9908 South Glen Road, Potomac,

...continued on p. 27, column 1

### MASTERPOINT RACE WINNERS —Corrections

In our last issue, we recognized the 2007 WBL Unit 147 winners of the Ace of Clubs and the Mini-McKenney masterpoint races. Because the lists we were working from were (without our knowledge) not quite final, three winners were accidentally omitted. Our belated congratulations go to:

#### 2007 ACE OF CLUBS

0-5  
**Phyllis Cohen**  
2500-5000  
**Eileen Theimer**

#### 2007 MINI-McKENNEY

100-200  
**Fran Sherwood**



## Great Game Products

7825 Tuckerman Lane, Suite 206, Potomac, MD 20854

**1-800-GAMES-4-U or 301-299-9005**

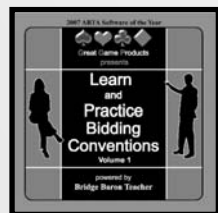
For more information or to order, visit our website at [www.bridgebaron.com](http://www.bridgebaron.com) • [sales@bridgebaron.com](mailto:sales@bridgebaron.com)  
(Shipping/handling not included • All prices in US dollars)

### Bridge Baron 18 \$64.95

• You can now see what Bridge Baron is “thinking” about, at higher levels of bidding and play • At higher levels of bidding and play, while Bridge Baron is “thinking”, you can force it to bid or play immediately by clicking the “Bid Now” or “Play Now” button • The option to choose among hand evaluation methods, such as long-suit point count or short-suit point count • Improved bidding and play, including improved Two-over-One bidding, improved matchpoint-focused bidding and play when playing tournament deals at matchpoints, and more realistic double-dummy cardplay • Bridge Baron can optionally alert and announce bids • We have greatly expanded and improved the statistics Improved claiming by Bridge Baron, especially in notrump contracts • Twelve new bidding conventions

Available on CD-Rom for Windows 95/98/2000/Me/NT4.0/XP/Vista (English, Francais, Deutsch)

Available on CD-Rom for Macintosh/iMac/Mac OS X 10.4 or later (English/Francais)



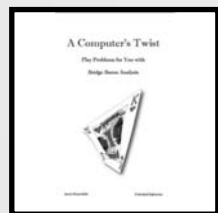
### Two New Editions of Learn and Practice Bidding Conventions \$29.95

Available on CD-Rom for Windows 95/98/2000/Me/NT4.0/XP/Vista (English only)

**Basic Conventions** (Volume 2): Blackwood, Takeout Doubles, Strong 2C, Preempts, Stayman, Jacoby Transfers, Weak Two-Bids

**More Basic Conventions** (Volume 3): Unusual 2NT, Michaels, Splinters, Limit Major Raises, Forcing 1NT, Jacoby 2NT, Negative Doubles

Practice conventional bids, responses, rebids on thousands of deals with feedback tailored to reinforce conventional understandings and correct bidding mistakes.



### A Computer's Twist:

**Play Problems for You with Bridge Baron \$19.95**

Not just your average book of bridge problems, “A Computer's Twist: Play Problems for You with Bridge Baron Analysis” provides challenging and entertaining bridge problems for you to enjoy and also includes a never before seen look inside the world of computer bridge!

### Bridge Baron Companion: How to Get the Most out of Your Computer Bridge Game \$24.95

If you are new to Bridge Baron, this book will help you get up and running quickly; if you are a long-time user, this book will point you to parts of the program you may not have previously explored and help you to use Bridge Baron to improve your bridge game.



## WBL SOLVERS' CLUB

Moderated by Steve Robinson

[robinswr@erols.com](mailto:robinswr@erols.com)

Congratulations to **Mike Deverin, John Klayman** and **Mark Chen** who tied for first with a score of 480. They win a free entry to the Unit Game and will be invited to be on a future panel. Tied for fourth were **Suresh Agarwal, John Kloke, Dave Smith, Pete Hughes, Robert Stone** and **Joav Steinbach** with a score of 470. Tenth was **Wrus Kristiansen** with a score of 460. Tied for eleventh were **Pete Ekstrand, Davis Bonner, Natalie Aronsohn, Hailong Ao, Diane Walker, Gene Fisher, Francis McMullan** and **Al Duncker** with a score of 450. Tied for nineteenth were **Bruce Kretchmer, Mark Rosen, Peter Haglich, Ken Davis, Michael Mayer, Barry Bragin, Ellen Cherniavsky, Arnie Frankel, Brad Theurer, Mark Shaw, Leo Lasota** and **Joe Wallen** with a score of 440. Tied for thirty-fourth were **Brian Schoenfeld, Thomas Luther, Michael Polunin, Kenneth Horneman, Michael Lawrence** and **Jay Weinstein** with a score of 430. The average score of the 229 solvers was 370. The average score of the experts was 434.

### Corrections from last month:

**Noble Shore** had a 500 instead of 490. **John Flynn** had a 450.

All readers are encouraged to send answers and/or new problems to Steve Robinson, 2891 S. Abingdon St. #A2 Arlington, VA, 22206-1329. In addition to the winner receiving a free play at the WBL Unit Game, Steve will play with anyone who gets a perfect score or who exactly matches all five of his answers. If you send a self-addressed stamped envelope to the above address along with your answers, I will send you a copy of the new problems to ensure that you can meet his next deadline. You can pick up a copy of the problems at the WBL Unit Game in Maryland, and can send answers or requests for problems to [robinswr@erols.com](mailto:robinswr@erols.com). You can also see and answer the problems at the WBL web site. WBL Solvers Club uses *Washington Standard* as published July 1996. I accept only one answer from each solver.

I personally score all the problems. If a majority of the solvers vote for an answer, and the answer is reasonable I will give that answer 100 points. I will not give 100 points to an answer that I consider had no matter how many experts vote for it. There are times when I want to make a point. I will give that answer 100 points and will therefore give the majority answer 90 points. For the other answers I consider how good the answer is and how many experts vote for it for its score. If you submitted an answer that got 20 points, that bid would get a bad score at the table. A good exercise would be to figure out why I gave your answer 20 points. You might have misread the problem.

The book *Washington Standard* second edition is out. If you are a serious bridge player, this book is a must. You can purchase a copy from Steve for \$25.00 at the Unit Game, at tournaments or can send him a check for \$29.80 that includes \$4.80 for priority mail.

### 1) Matchpoints, None Vulnerable

♠ 8732♥ Q1063♦ 54♣ J9

SOUTH	WEST	NORTH	EAST
	Pass	1♠	2♥

?????

Action	Score	Votes	Solvers
Pass	100	7	96
3♠	70	3	65
2♠	60	2	59
4♠	30	0	05
Double	20	0	01
3♥	20	0	03

There are principles that one uses when competing. When you are long in the opponent's suit be conservative, when short be aggressive. Second principle is don't bid with nothing. If you bid some number of spades, partner who is obviously short in hearts might not stop bidding and this dummy will be a disappointment. Holding five hearts, you're very likely to get another chance to bid and then partner will play you

for a weak hand. If 2♥ somehow gets passed out, East is playing in your 5-3 heart fit.

Six experts join me and pass and wait further developments. It is almost 95% that either partner will reopen or LHO will bid.

**Zhong:** “Pass—Bidding will not stop here, I will have chance to bid my spades later.”

**Shore:** “Pass—I want to compete, but I don’t want partner to bid game. Since he is almost sure to bid again, I’ll just bid spades next round. If partner doesn’t reopen, his hearts can’t be too short and so I get a good score anyway since they missed their minor fit.”

**Adams:** “Pass—Tempting to preempt with 3♠, to keep them from finding their big minor suit fit, but risks are too great. The only way for them to play hearts is if I pass. Bidding spades gives them a responsive double, without which, finding their fit will be tough. If I bid spades and partner has heart shortness, he might bid 4♠ hoping for some help elsewhere.”

Suppose West holds ♠xx♥xx♦AKxx♣Jxxxx. If you pass, West has a difficult decision. If you bid some number of spades, West has an easy responsive double. The worst thing that could happen if you bid is that West has three hearts, bids 4♥ and partner saves.

**Hopkins:** “Pass—I don’t have a singleton and only one likely working point for partner, although the doubletons should be worth something. Surprisingly, this may make it harder for the opponents to find their best minor suit fit which they might easily do if I preempt in Spades and allow LHO to make a responsive double.”

**Woolsey:** “Pass—No aces + no kings + no voids + no singletons = no bid. Anything I do may encourage partner to bid too much. The opponents aren’t likely to find a minor-suit fit, and if they do I can always compete to 3♠ if I so desire. I think there is a good chance that partner will re-open with a double, I will bid 2♠, and the auction will then be over.”

**Cappelletti:** “Pass—2♠ might get your partner overboard and I would not be broken hearted if 2♥ was passed out.”

Five experts raise spades. 3♠ shows at least four spades but less than a limit raise. I would need a singleton or an honor somewhere. While 3♠ is preemptive, partner usually plays you for something. You would

make the same bid with a king and a queen ♠xxxx♥xxxx♦Kxx♣Qx for instance.

**Lublin:** “3♠—Weak. I’m never going to get to defend 2♥ doubled.”

**Landen:** “3♠—Anything less is cowardly. Even though the opponents won’t do great in hearts, they might make game in notrump or a minor.”

**King:** “3♠—I would like a little better distribution, but there should be safety at the three-level non vulnerable with at least nine trumps.”

Two experts bid 2♠.

**Parker:** “2♠—I know the law says bid 3♠, but this hand sucks. I do owe him a bid with four trumps. I would not pass 2♥ with this hand knowing he will reopen and then bid 2♠, which could be based on two trumps and I would not pass 2♥ doubled for penalties. If you would raise if RHO had passed, then support now.”

If RHO had passed, I would bid 1NT forcing and then support spades. A direct 2♠ raise says that you would accept at least one game try.

**Schwartz:** “2♠—Don’t like 3♠ with those hearts, but with four trumps I have to do something. Partner should not hang you by doubling when you make a single raise.”

What partner may do is to save in front of you. When you have nothing bid nothing.

## 2) Matchpoints, Both Vulnerable

♠ 92♥ AKJ92♦ -♣ J108742

SOUTH	WEST	NORTH	EAST
Pass	Pass	1♥	2♦
?????			
Action	Score	Votes	Solvers
3♦	100	2	69
2NT	100	1	02
4♦	90	7	85
5♦	80	2	00
3♥	30	0	10
3♣	30	0	12
4NT	30	0	02
4♣	20	0	03
Double	20	0	01
4♥	20	0	45

Some might have opened this hand and I would have since it falls into the rule of 20. Add your HCP and the length of your two longest suits. If the total is 20 then you can

open. We have an amazing hand opposite a 1♥-opening. We need very little to make a slam. Partner has weak trumps and won’t be happy to cooperate with us. Opposite as little as ♠AQxx♥xxxx♦xxxx♣x, slam has play. This is not a normal passed hand and that means that normal bids won’t work. There’s something to be said for walking the dog. Bid 2♥ or pass and assume that there will be further bidding. Every time it’s your turn to bid, bid the cheapest number of hearts and hope to get doubled.

Unless you’re planning on bidding again, 4♦ won’t work. The worst splinter is the one directly below the trump suit since it leaves no room for partner to counter try. Also, there’s a big difference between a singleton and a void. Partner will like the ace of diamonds, which is worth very little opposite a void.

Seven experts make the bid that won’t work I can’t see partner making a move above 4♥ with weak trumps unless he has Ace-King Ace in the blacks.

**Parker:** “4♦—I need to show a good hand and a splinter does it. I could bid 3♦ but that won’t help partner evaluate his hand if he has points in diamonds. The problem with such good trumps is partner would never move to slam unless he has good controls outside of diamonds.”

**Shore:** “4♦—I need to indicate slam potential and diamond shortness. I would make the same bid even if I wasn’t a passed hand.”

**Cappelletti:** “4♦—Splinter. I would open this hand 2♥ or even 1♥ rather than pass.”

**Lublin:** “4♦—I bid 4♦ and pull all doubles of spade bids by opponents.”

**Adams:** “4♦—Seems like a reasonable one-bid description of my hand. I should have a special kind of hand to force game opposite third seat opener, so not too concerned that this will understate my hand.”

4♦ is an underbid.

**Schwartz:** “4♦—Would like an outside control but a void, good trumps and being a passed hand should suffice.”

**King:** “4♦—Partner’s values are mostly in the black suits, so I want to show him that I have diamonds under control.”

I’m not sure what will happen next but 3♦ has to be better than the alternatives. Since you can’t describe this massive hand to partner, why not let partner describe his

hand. If partner jumps to 4♥, 6♥ would be a good guess. If partner bids 3♥, you can make a further slam try. Maybe there will be competition and you can take a good save in 5♥. A good save is one that makes.

**Landen:** “3♦—The sky’s the limit. I’ll start with a cue bid and hope to be able to cue again later. 4♦ doesn’t express the power of this hand. It’s sole merit is it jacks up the bidding immediately.”

**Zhong:** “3♦—Splinter. 4♦ leaves no room for slam try. 4♣ is another option if it is fit jump for passed hand.”

Two experts bid 5♦. How is partner supposed to know that all he needs is the AQ of spades and a singleton club for slam to be good? One of the problems with 5♦ is that some players play it as Exclusion. Tell me how many keycards you have outside of diamonds.

**Hopkins:** “5♦—Even if exclusion RKCB is not your normal style, almost all players would recognize this as artificial and slam going, probably showing a void since 4♦ would be a splinter.”

**Woolsey:** “5♦—Clearly this hand qualifies for a splinter as a passed hand. But is this enough? I have the combination of huge trumps and a void. If I bid 4♦, partner will not play me for this much, so I would be uncomfortable passing 4♥. Since I would be uncomfortable passing 4♥, I think it is better to describe my full hand right away. This unusual bid must show a diamond void and huge trump support—what else could it possibly be—so partner will get it right. I think this descriptive call, which both gets us to slam when we belong there and tells partner what to do in case of enemy competition, gains more than the loss when 5♥ doesn’t make.”

I gave a top score to 2NT. In *Washington Standard*, 2NT by an unpassed hand is a four-card game-forcing raise (*Jacoby*). By a passed hand, 2NT is a four-card or longer limit raise.

When no bid completely describes your hand make the cheapest descriptive bid.

## 3) IMPs, Both Vulnerable

♠ A♥ AQ6532♦ A643♣ Q8

SOUTH	WEST	NORTH	EAST
1♥	Pass	1NT	Pass
?????			

Action	Score	Votes	Solvers
2♦	100	10	74
3♥	50	2	92
3♦	40	0	25
4♥	40	0	12
2♥	40	0	20
5♥	20	0	01
3NT	20	0	03
4♣	20	0	01
2NT	20	0	01

How do you show a good hand with a weak six-card major over partner's notrump response? You bid two-of-your-longer minor. 2♦ is reasonably safe. If partner passes 2♦, he is short in hearts which means that hearts might not play well. If partner has two hearts, and a minimum hand, he'll bid 2♥. Now you can bid 3♥, knowing that you have an eight-card heart fit and telling partner that his red honors are valuable.

**Parker:** "2♦—This shows at least four so partner will only preference hearts with two and I can bid then again. If he passes at IMPs we should be OK. I don't want to bid 3♥ on such a bad suit. 2♣ the expert bid, is ridiculous."

**Zhong:** "2♦—Heart suit is not good enough for 3♥. Wait for partner to show his hand."

**Shore:** "2♦—Normally with 6-4 and 16 HCP it's right to bid the four-card suit, then raise a preference to the three-level. With so many HCP in short suits and no spots, maybe this hand isn't good enough—however it's red IMPs so aggressively trying for game seems OK to me."

**Landen:** "2♦—No reason to jump yet as partner will strain to keep the bidding alive. 3♥ is my second choice, but the suit is not up to standards and diamonds might be where we belong."

**Adams:** "2♦—Too good for 2♥, and suit lacking for 3♥. If partner passes, 2♦ rates to be good spot. Partner with two Hearts, and 8+ points will not pass 2♦."

**Schwartz:** "2♦—Bidding hearts next shows extra values, and if it goes all Pass, we don't have a sure game."

**Hopkins:** "2♦—This can be wrong a fair amount of the time but not always! if partner lets me play it here. I might end up in a 4-2 Diamond fit where a 6-1 Heart fit would have been better. On the plus side, I am very well placed to continue if I get a chance."

**Woolsey:** "2♦—If partner passes, there is a good chance that this is where we belong. If partner does anything else, my follow-up 3♥ call will describe this hand very accurately. An immediate 3♥ rebid both may get us too high and lose out on a possible diamond fit."

**King:** "2♦—I will then bid 3♥ to show a good 6-4 in the reds. If partner passes 2♦ I doubt there is a game and this may be our best part score."

Two experts jump in hearts. 3♥ will not play well opposite ♠ Kxx♥♦ KQxxx♣ Jxxxx. ♠ A♥ AQJ1098♦ K643♣ J8 is a 3♥ bid.

**Cappelletti:** "3♥—I like 6-4 hands."

**Lublin:** "3♥—To shut out the spade bids."

When you have a weak six-card major, respond two-of-your-longer minor.

#### 4) IMPs, They're Vulnerable

♠ AQ43♥ 65♦ A104♣ K876

SOUTH	WEST	NORTH	EAST
1♣	Pass	1♥	3♥*
Pass	Pass	4♦	Pass
????	*(natural)		

Action	Score	Votes	Solvers
Pass	100	6	99
5♦	80	3	85
4♠	70	2	33
5♣	20	1	01
4NT	20	0	04
4♥	20	0	05

There is logic in this auction. If partner had better hearts than diamonds, he would have doubled 3♥. His 4♦-bid means that his diamonds are longer than his hearts. The only reason to bid bad hearts before good diamonds is that the hand is weak. With ♠ Kx♥ AKxx♦ KQJ10x♣ xx, you respond 1♦ to partner's 1♣ opener. If you're playing a Walsh style you respond 1♥ holding ♠ xx♥ Kxxx♦ KQJxxx♣ x. *Walsh* says bid majors before minors. *Washington Standard* does not use Walsh so I would respond 1♦. What's going on here? Partner can't have good hearts since he didn't double. It seems that partner is playing *Walsh* and hasn't told you.

Five experts join me and pass 4♦. Even if partner has an opening bid, his failure to double 3♥ or bid 3NT means that we start off with two heart losers and will have to handle a third round of hearts.

**Parker:** "Pass—What does partner have? With a good hand and four or more diamonds and four hearts he should bid diamonds first. With a bad hand he bids hearts first. He bid 1♥ rather than 1♦ so he should have more hearts than diamonds if he has good hand, yet he did not pass out 3♥. With a weak hand partner should bid hearts with four rather than diamonds. So, he must have a weak hand and long diamonds. My guess he has six or seven diamonds, four hearts and a bad hand. Good problem, especially if I am right!"

**Zhong:** "Pass—Partner shows 4-6 competitive hand. Hard to see we can make 5♦."

**Landen:** "Pass—I assume this is some sick Walsh auction where partner has four bad hearts and six good diamonds. I can't stand that. If partner had five or more hearts, as I would, then he would double 3♥ thus must be 4-6 and not forcing as they would bid diamonds first with a game forcing hand."

**Adams:** "Pass—Must be playing Walsh style for this bidding to make sense, in which case partner has long Diamonds, and a hand not worth a game force. ♠ x♥ Jxxx♦ KQJxxx♣ x seems like a possible hand. With an Ace more, I would hope partner would have bid 1♦."

**Woolsey:** "Pass—Partner clearly has longer diamonds than hearts, and I don't see why 4♦ should be forcing although admittedly this is an unusual sequence. If partner had a heart stopper he might have tried 3NT so the defense will start off with three rounds of hearts, and partner will need solid diamonds and the ace of clubs to make game. I guess he could have that, but it isn't the way to bet."

Five experts take a safety play. When you're not sure what a bid means, don't pass it.

**Hopkins:** "5♦—Well, technically, partner's call should be forcing so I am going to play it simple and raise. For all the "frequent bypass" folks, I wonder if partner is locked out of the auction with longer Diamonds and a weak hand or if this sequence should be defined as that hand."

**King:** "5♦—It could be right to pass as I don't think 4♦ is forcing, but I expect the spade finesse to work if needed and my ten of diamonds should help partner draw trumps if the opponents start with three rounds of hearts."

**Shore:** "5♦—I think the main question is whether 4♦ is forcing, because I cannot imagine doing anything other than 5♦ or

pass. If I was responder and had a bad hand with long diamonds and poor hearts I'd pass, to avoid walking into a possible misfit and because partner might think 4♦ was forcing. Thus I think 4♦ shows a good hand with poor hearts and long diamonds. I think opener's double here means a good hand, and that's how you compete to 4♦ when responder has a weak hand with a fistful of diamonds."

**Lublin:** "4♠—Wish I could pass."

**Cappelletti:** "4♠—Since I have reasonable values, 4♠ is most flexible bid - probably on our way to 5♦."

**Schwartz:** "5♣—I have two answers depending on whether we play Walsh bypassing diamonds with a weak hand. If we don't which I believe is *Washington Standard*, then I would play partner for an esoteric club raise. Since partner did not bid 4♥ so has no heart control, we have two losers so I bid 5♣. If we do play Walsh, I would play partner for a moderate hand with four hearts and six diamonds. Since there are likely three losers, I pass 4♦. LHO might even ruff partner's opening heart lead to get trumps going."

Sometimes the auction tells you what partner has.

#### 5) Matchpoints, You're Vulnerable

♠ KJ107♥ 1097♦ 652♣ K54

SOUTH	WEST	NORTH	EAST
Pass	1♠	2♣	3♣
????			

Action	Score	Votes	Solvers
3NT	100	2	06
Double	80	9	92
Pass	70	1	122
4♣	50	0	07
3♠	30	0	02

If the auction had gone 1♦ - 2♣ - 3♣, 3NT by the opponents is a possibility, therefore double of 3♣ is a lead director. You double 3♣ with any honor even with the queen. However, when a major suit has been raised, competing is more important than lead direction. Double of 3♣ tells partner that you would have raised to 3♣. Since your KJ10x of spades will probably be worthless in a club contract, the last thing you want to do is to encourage partner to bid 4♣. Partner needs to know whether to bid

again holding a hand such as ♠x♥xx ♦AKxx♣AQxxxx. Make your KJ of spades, the QJ of diamonds and 4♣ is cold.

I'm not sure what your vulnerable 2♣ overcalls look like but mine are opening bids with good clubs. Since you have the King of clubs, partner can't have just good clubs. Partner's clubs has to be better than AQxxx. You have a double stopper in the opponent's suit and club help. If partner has ♠x♥QJx ♦AQx♣AQxxxx, 3NT needs a little luck and could be cold. Even if partner has less, the opponents still have to take five tricks before you take nine. It could very easily be your hand since West opened in third seat.

One expert agrees with me and bids his hand.

**Zhong:** "3NT—Bidder's game, bid what I think I can make."

Nine experts encourage partner to bid. How will you feel if West signs off in 3♠ and partner bids 4♣, which is what happened at the table. You're cold for 3NT, and go down in 4♣.

**Lublin:** "Double—Get the lead director."

**Parker:** "Double—Shows one of the top club honors. The real question is what do you do over 3♠? I would pass?"

**Shore:** "Double—Hopefully this doesn't have some special meaning in Washington Standard of which I'm unaware. I would double for a club lead without thinking about it in my partnerships."

**Cappelletti:** "Double—Mandatory with A, K or Q of partner's suit - and not enough offense to raise."

**Landen:** "Double—I don't see how this

can be wrong. To my mind, this shows a high club honor and not necessarily much else. I want partner to lead a club, so I double. If he bids clubs again, that's his problem and he might be right. My defense against spades is not that great."

**Adams:** "Double—This is lead directing, not a club raise. I am ready for post mortem if partner saves. Seems likely that taking our clubs will be important, else I would have to helplessly follow to red suits as declarer's clubs are discarded."

**Schwartz:** "Double—Certainly want a club lead, and if partner happens to need a spade stopper, he can double 3♠. He won't be sacking at this vulnerability as I don't show club support."

**Woolsey:** "Double—I play this as lead-directional, not showing interest in competing, when the opponents cue bid partner's suit at the three-level or higher. Thus, I am not worried about partner getting excited. Without this agreement, the double is dangerous."

**King:** "Double—I want a club lead against a spade contract."

One expert bids my second choice. If you're not going to bid 3NT, don't encourage partner to bid 4♣.

**Hopkins:** "Pass—Four of my seven HCP are in the opponent's suit which is my longest and I have three losers in each of the outside suits so my hand is not a bundle of joy for partner."

This hand is similar to hand one. Don't encourage partner when you don't want him to bid.

**SOLVERS' SCORES**

John Adams	Pass	4♦	2♦	Pass	Dbl	470
Mike Cappelletti	Pass	4♦	3♥	4♠	Dbl	390
Robbie Hopkins	Pass	5♦	2♦	5♦	Pass	460
Fred King	3♠	4♦	2♦	5♦	Dbl	420
Steve Landen	3♠	3♦	2♦	Pass	Dbl	450
Glenn Lublin	3♠	4♦	3♥	4♠	Dbl	360
Steve Parker	2♠	4♦	2♦	Pass	Pass	420
Steve Robinson	Pass	2NT	2♦	Pass	3NT	500
Alan Schwartz	2♠	4♦	2♦	5♣	Dbl	350
Noble Shore	Pass	4♦	2♦	5♦	Pass	470
Kit Woolsey	Pass	5♦	2♦	Pass	Dbl	460
Yi Zhong	Pass	3♦	2♦	Pass	3NT	500

OUR PROFESSIONAL TEAM OF CERTIFIED PUBLIC ACCOUNTANTS IN ROCKVILLE CAN ASSIST YOU WITH A WIDE RANGE OF ACCOUNTING AND TAX SERVICES.



JOHN BARKANIC



BARBARA AMES

Dedicated to excellence in client service.

**Tax & Business Services Available:**

- Income Tax Return Preparation
- Estate & Trust Administration
- Business Profitability Enhancement
- Estate Tax Return Preparation
- Planning for Retirement Plan Setup & Distributions
- Buying & Selling Business Consulting
- IRS Audits and Negotiations
- Divorce Tax Issues/Planning
- Nonprofit Organization Accounting & Income Taxes
- Quickbooks Setup & Consulting

**BARKANIC & AMES L.L.C.**

CERTIFIED PUBLIC ACCOUNTANTS

CPA

15825 Shady Grove Road, Suite 130  
Rockville, MD 20850  
301-330-6664 • 301-330-6860 Fax • www.fbacpa.com



**2008 TROPHY RACE STANDINGS**

[www.WashingtonBridgeLeague.org](http://www.WashingtonBridgeLeague.org)

Updated by our Webmaster, Don Berman

The Lovenberg Race is open to all WBL members; the Izzy Cohen Race is open to all WBL members who started the calendar year with less than 1500 masterpoints; the Tubbs Race is open to all WBL members who started the calendar year as a Non-Life Master with less than 500 masterpoints; the Woolridge Race is open to all WBL members who started the calendar year with less than 20 masterpoints.

Winners in each category receive four sessions of free plays. Second place gets two and third place gets one.

This list is up to date through June 5. All points are subject to audit by the WBL Director.

**Lovenberg**

- 1 104.82 Barry Bragin
- 2 90.07 Mark Shaw
- 3 84.70 Brad Theurer
- 4 84.10 Steve Robinson
- 5 79.36 Leo LaSota
- 6 64.73 Martin Graf
- 7 63.84 Leon Letwin
- 8 56.79 Robert Bell
- 9 55.11 William Hacker
- 10 52.23 Fred King
- 11 51.76 Lloyd Rawley
- 12 51.10 Peter Boyd
- 13 50.17 Clyde Kruskal
- 14 49.60 Robin Taylor
- 15 48.18 Steven Schatzow
- 16 43.43 Noble Shore
- 17 43.29 Ronald Zucker
- 18 42.74 David Ruderman
- 19 42.39 Lynn Jones
- 20 42.02 Charleen Brand
- 21 41.87 Michael Gill
- 22 39.37 Robert Stearns
- 23 37.34 Michael Richey
- 24 35.97 Arnie Frankel
- 25 33.93 Donald Berman

**Izzy Cohen**

- 1 51.76 Lloyd Rawley
- 2 49.60 Robin Taylor
- 3 43.29 Ronald Zucker
- 4 41.87 Michael Gill
- 5 37.34 Michael Richey
- 6 33.54 Joel Miller
- 7 30.94 William Goldman
- 8 30.84 Daniel Koch
- 9 28.67 Arun Guha
- 10 28.29 Mark Rosen
- 11 26.94 Richard Ferrin
- 12 26.66 Robert Henry
- 13 26.37 Jeffrey Kosnett
- 14 25.90 Howard Tash
- 15 24.19 Margie Coccodrilli

**Tubbs**

- 1 30.94 William Goldman
- 2 28.67 Arun Guha
- 3 22.69 Mirsad Mujezinovic
- 4 19.54 Bernadette Merceron
- 5 19.05 Richard Wessman
- 6 18.93 Namik Haveric
- 7 18.48 Alfred Liepold
- 8 18.28 Suzanne Floyd
- 9 17.84 Kay Miller
- 10 17.77 Marc Weiner

**Woolridge**

- 1 19.54 Bernadette Merceron
- 2 10.33 Edmund Gehan
- 3 7.10 Douglas Woods
- 4 6.55 Phyllis Cohen
- 5 5.97 Stanley Katzman
- 6 5.60 Patricia Mitchell
- 7 5.13 Susan Holbeck
- 8 5.04 T S L Perlman
- 9 4.63 Anne Menkens
- 10 4.33 Dennis Olson

**UNIT GAME CARPOOL AVAILABLE**

To arrange a carpool, contact Don Berman, Carpool Coordinator, at 301-776-3581 or [don.berman@verizon.net](mailto:don.berman@verizon.net). ....Or log on to the WBL's new **Online Carpool Notices** at: [www.WashingtonBridgeLeague.org](http://www.WashingtonBridgeLeague.org).

**0-20  
LESSON  
& GAME**

**GUARANTEED  
PARTNERS!**

**7:30PM -  
10:30PM**

**JOIN ANYTIME**

The cost is \$5. This includes a 30 minute lesson followed by fun, enjoyable bridge for players with 0-20 masterpoints.

Lessons will cover slam bidding, weak twos, 3 level+ pre-empts, overcalls, takeout doubles, negative doubles, opening leads, and signaling. Each lesson will be tailored to the needs and interests of the players.

This is a great program for beginners as well as experienced social bridge players! Partners will be provided if needed. For more information, contact Shawn Stringer at (301) 622-5619 or by email at [shstringer@aol.com](mailto:shstringer@aol.com)

~ ♦ SCHEDULE ♥ ~

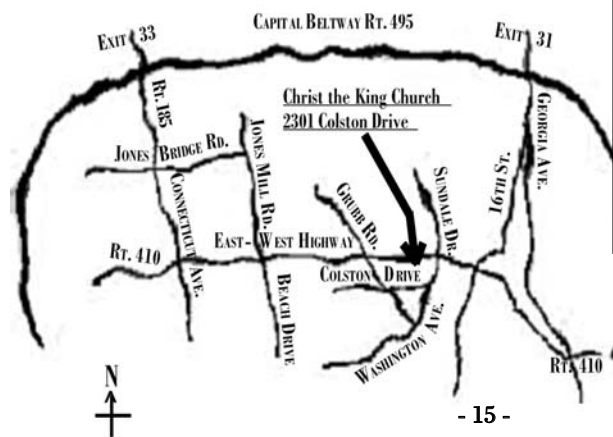
All Games held at Christ the King Church

- 08/07/2008 .....WBL Sectional
- 08/14/2008 .....StrataFlighted Club Championship
- 08/21/2008 .....StrataFlighted Unit Championship
- 08/28/2008 .....StrataFlighted North American Pairs
- 09/04/2008 .....NVBA Sectional
- 09/11/2008 .....StrataFlighted Unit Championship
- 09/18/2008 .....Stratified STaC Pairs
- 09/25/2008 .....StrataFlighted Club Championship upg
- 10/02/2008 .....WBL Sectional
- 10/09/2008 .....StrataFlighted Appreciation Pairs
- 10/16/2008 .....StrataFlighted Charity Pairs
- 10/23/2008 .....NVBA Sectiona
- 10/30/2008 .....StrataFlighted A/X BAM; B/C/D Swiss
- 11/06/2008 .....StrataFlighted Unit Championship
- 11/13/2008 .....StrataFlighted GNT Swiss Teams
- 11/20/2008 .....StrataFlighted Unit Championship
- 11/27/2008 .....Closed Thanksgiving
- 12/04/2008 .....StrataFlighted GNT Swiss Teams
- 12/11/2008 .....Holiday Party StrataFlighted Charity Game
- 12/18/2008 .....Stratified STaC Pairs
- 12/25/2008 .....Closed Christmas

**For a Last-Minute Partner, to say you'll be late, to hear announcements (closings posted by 4pm), or to contact the Unit Game for any reason, call the WBL Cell Phone:**

**(301) 395-2760**

**MAP TO CHRIST THE KING CHURCH**



**WBL GUARANTEED  
PARTNER PROGRAM**

You never need to miss the unit game because you don't have a partner at the last minute! The WBL has a guaranteed partner (GP) program for players who occasionally need a partner for the unit game. Here's how it works: we provide a standby partner; if an odd number of people in need of a partner arrive, we match the players as best we can, and the GP plays with the one who is left. (If there is an even number of players looking, the GP goes home). You can always get a game.

Players in search of partners should try to arrive between 7:00 and 7:15 (or call ahead). The partnership desk closes at 7:25. You can call the WBL cell phone **(301) 395-2760** at the last minute if are on your way and know you'll be at bit late.

To find a partner at least a day in advance, contact **Barbara Doran** (see below), or log on to the **Online Partnership Bulletin Board** at: [www.WashingtonBridgeLeague.org](http://www.WashingtonBridgeLeague.org).

You might want to volunteer for the GP program yourself. It's a great way to meet people. If you play on the night you're the GP, you play free. If you volunteer, you receive a free play for any future unit game whether or not you play that night.

Email **Barbara Doran** at [UnitGamePartner@DistrictSix.org](mailto:UnitGamePartner@DistrictSix.org) or [barbd@starpower.net](mailto:barbd@starpower.net), or call her at (301) 608-0347 between 9am and 10pm.

**Partnerships Close At 7:25pm**

TO START THE GAME PROMPTLY AT 7:30PM. CALL IF YOU'RE LATE, OR YOU MAY NOT BE ACCOMMODATED.

## THE UNIT GAME

by Ted Ying, unitgamedirector@districtsix.org

This column will answer some frequently asked questions about the WBL Unit Game. **Ted Ying** is the Club Manager and Chief Director of the WBL unit game. He can be reached at [unitgamedirector@districtsix.org](mailto:unitgamedirector@districtsix.org)

### TIME TO PLAY BRIDGE

The WBL unit game is a timed event and one of the most frequent issues that I've had to deal with over the last 16 years is how to keep the game moving. We've made some changes over time to improve our efficiency from the director's staff, but there are some things that players can do that will help us run a smoother game.

Before the game, please confirm your bridge date. If you have not spoken to your partner for more than 2-3 days, please confirm either by phone or e-mail that you have a date. **If you are running late, please call the WBL cell phone at 301-395-2760.** Often a game is held up when one pair has a late player who hasn't show up and we don't know if the player will show up or not. Or a pair comes in after game time trying to play. We try to accommodate these players as much as possible, but it delays the game for everyone. When the number of pairs in an event changes, it can mean a lot of work for the directors to rearrange the game, the number of boards in play and where the players are seated. This can delay the game 5-10 minutes for just one pair.

When one table falls behind, there can often be a cascade effect and tables or pairs in both directions can be affected. When playing the game, the following tips can help you play within the time limit for a round or catch up when late. *...continued on p. 18, top*

**New WBL Board Ruling:** Players may not bring in or consume outside alcohol during WBL Unit or Sectional games.

### UPCOMING SECTIONALS

♠	♥
<u>August 7-10, 2008</u>	<u>October 23-26, 2008</u>
Silver Spring, MD	Fairfax, VA
♣	♦
<u>September 4-7, 2008</u>	<u>January 8-11, 2009</u>
Fairfax, VA	Silver Spring, MD
♦	♥
<u>October 2-5, 2008</u>	<u>February 5-8, 2009</u>
Silver Spring, MD	Fairfax, VA

## DO YOU HAVE ANY MUSCLE OR BRAINS TO SPARE?

The Washington Bridge League could use a little of either! In order to keep events exciting and entry fees low, the WBL relies on the goodness of our members to volunteer for small jobs at the Unit Game and Sectional Tournaments. Some jobs require brains while others require muscle. We'll be happy to employ either.

From setting up and breaking down tables, to publicity and events development, a little effort from you will make our bridge community even better. Busy schedule? No worries. Most volunteer assignments take only 15 minutes to 1 hour a month.

### Here's how to help:

1. Reply by email, phone or in person if you are willing to help in any way.
2. Please indicate if you can offer any special skills (such as marketing or a strong back).
3. Someone will contact you shortly with a choice of assignments you can pick from.

**BONUS** – You will be invited to the summer Volunteer Gathering and BBQ Party.

*Thank you in advance for any assistance you can provide.*

**Barbara Summers**, Volunteer Coordinator, 301-598-5838, [jimbarb1184@aol.com](mailto:jimbarb1184@aol.com),

## COMMITTEE ACTION #62

by Rich Colker, rcolker@mail.com

The first qualifying session of the Lebar IMP Pairs at the Detroit NABC this past spring produced an appeal that reflects a common problem for casual/non-expert pairs. Here's what happened.

Bd: 10; Vul: Both; Dlr: East

♠ QJ64	♠ —
♥ AK43	♥ J1062
♦ J2	♦ AK1083
♣ J86	♣ Q952
♠ K2	♠ A1098753
♥ Q987	♥ 5
♦ Q97	♦ 654
♣ AK43	♣ 107

West	North	East	South
		Pass	2♠
Dbl	3♥	3♠	Pass
3NT <sup>(1)</sup>	Pass	4♦	All Pass

(1) W asked about the meaning of 3♥; S said "nothing special"

4♦ made four, +130 for E/W. After the end of play, during a discussion between E/W as to how they could have reached 4♥, North said to South, "Don't you remember? My 3♥ bid was lead directing with a spade fit" (McCabe). Since E/W had not been Alerted that 3♥ was not intended to play and showed a spade fit the Director was called to adjudicate the situation.

The Director determined that South's explanation was MI and, in accordance with Laws 12, 21 and 40 adjusted the result to 4♥ by East made four, +620 for E/W. N/S appealed this decision.

N/S explained that they live at opposite ends of the country and for many years have occasionally played at NABCs for a few days. North, the more experienced player of the two, frequently makes suggestions about how certain auctions should be played. Though South often listens, she frequently does not incorporate the suggestions into her understanding of their partnership agreements. South added that she would have

recognized a bid of 4♥ as a fit-showing jump.

The Committee determined that neither of N/S's convention cards contained any indication that new suits by responder in auctions like the present one were conventional (lead directing with a fit for opener's suit). Therefore, the Committee decided that South's explanation of 3♥ as "nothing special" was accurate. Given the lack of any special N/S understanding about the bid it was concluded that E/W were damaged by their own judgment and not by any misinformation. Thus, the table result of 4♦ by East made four, +130 for E/W, was reinstated.

While I agree (in theory) with the Committee's finding that no conventional agreement about the 3♥ bid existed for this pair, I find this all-too-common situation to be in need of a resolution that is more equitable to the innocent opponents. Experienced (and expert) players like North in the present case should be held accountable for establishing clear and explicit partnership agreements. I find simply "suggesting" a new method to a (relatively) inexperienced partner and then acting as though it exists without obtaining a firm agreement to play the method to be negligent and in direct violation of the ACBL regulation that players—especially those who play regularly (even if infrequently)—know their conventional methods in all reasonably anticipatable situations. And a conventional method that a player assumes is being played in the absence of a firm agreement is still a conventional method.

So when discussion occurs about possibly adopting a new method, experienced players should be held responsible for making sure the partnership has reached a mutual understanding about whether or not to play the method; the proof of which is that both members add the new agreement to their convention cards (and the partnership's notes, if they exist) as soon as possible. I disagree with those who advocate penalties for players who forget their methods. But using "uncorroborated" methods should be treated as misinformation whenever there is evidence that negligence (and not just forgetfulness) by an experienced player was involved.

**The Unit Game** continued from p. 16...

- ◆ When you are opening leader, make your lead first and write contracts down (either on your personal score or the scoring ticket) afterwards while the dummy is being laid down.
- ◆ Remember to confirm the final result of a hand **BEFORE** anyone moves cards from their played position. If there is a question, this makes it easier and faster for the director to resolve.
- ◆ Avoid discussing hands in the middle of a round. Wait until the end of the round when you know that you have time left over to discuss any issues. Or wait until the end of the night when you have hand records. A discussion in the middle of a round can take valuable time away from the last board of the round.
- ◆ Pay attention to when the directors call the rounds. Do not start a hand after the director calls a round, but ask the floor director if they want you to play the hand or take a late play. If you start after the round has been called, you

may earn a late warning or penalty.

- ◆ If you are late, it is inappropriate and rude to take a break, get snacks or coffee, or run to the rest room. If you do so, you will be held responsible for any lateness. If you play through a hospitality break, you are not entitled to additional break time and will have to take your break when you have caught up.
- ◆ If you are waiting for a pair more than once, let the floor director know. It is much easier to contain a problem that we catch early rather than when the problem has cascaded to three or four tables.
- ◆ If you have been given a slow play warning, your first priority should be to catch up. Falling further behind and then arguing the penalty with the director only delays the game more.

If you have any questions about how the Unit Game is run, please send them to me at [unitgamedirector@districtsix.org](mailto:unitgamedirector@districtsix.org) and I will try to answer them in upcoming columns.

Do you get along with your computer?

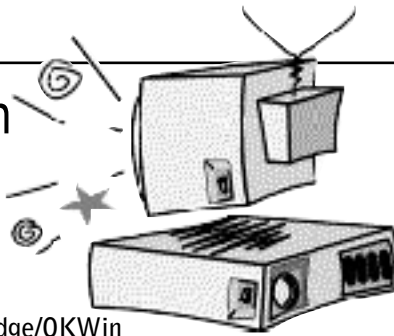
*Help is here!*

- Get on the internet
- Computer purchase
- Computer setup
- Email setup
- Software installations
- Programming
- OKBridge/OKWin
- Microsoft Word
- Microsoft Excel/Access
- Web Page Design
- Uploads and Downloads
- Phone support



Diane Walker

dibasoft  
Computer Consulting  
301-990-8534  
[diane@dibasoft.com](mailto:diane@dibasoft.com)



Paid Advertisement

Paid Advertisement

♣ **Fairfax, VA** ♦ **OCTOBER 23-26, 2008** ♥

*Special treats and door prizes all day Saturday — certificates for reduced parking and entry fees at your 2009 Summer NABC!*

**NVBA FALL SECTIONAL TOURNAMENT**

The Arlington/Fairfax Elks Lodge #2188  
8421 Arlington Boulevard,  
Fairfax, VA; 703-560-2213

*Fall into Fun!*

**THURSDAY, OCTOBER 23**

Beth El Hebrew Congregation, 3830 Seminary Road, Alexandria, VA (NVBA)  
Christ the King Church, one block south of East-West Highway on Colston between Washington and Grubb, Silver Spring, MD (WBL) **NVBA (Beth El) WBL**

**Novice/Intermediate Lecture	6:30 p.m.**
STRATAFLIGHTED OPEN PAIRS (A/X=3000+/3000; B/C=2000/750)	7:00 p.m. . . . 7:30 p.m.
NVBA 199ER PAIRS (200/100/50/20); WBL NLM PAIRS (NLM/100/50)	7:00 p.m. . . . 7:30 p.m.
NEWCOMER PAIRS (0-5)	7:00 p.m.

**...REST OF TOURNAMENT AT ELKS LODGE...**

**FRIDAY, OCTOBER 24**

STRATIFIED OPEN PAIRS (2000+/2000/750)	2 p.m.
299ER PAIRS (300/200/100) and 49ER PAIRS (50/20/5)	2 p.m.
TRIPLE NICKEL SWISS (STRATIFIED 2000+/2000/750)	7:30 p.m.
—5 rounds, 5 boards, 5 minutes a board	
299ER PAIRS (300/200/100)	7:30 p.m.

**SATURDAY, OCTOBER 25** *...Special NABC FUND-raising Day!*

STRATIFIED OPEN PAIRS (2000+/2000/750)	9:30 a.m.
299ER PAIRS (300/200/100) and 49ER PAIRS (50/20)	9:30 a.m.
0-5 PAIRS	9:30 a.m.
NABC AUCTION and RAFFLE begin!	12:30 - 2 p.m.
<i>Support your NABC! Live auction to bid on bridge pros and play at 2 today! Silent auction for time share weeks, sports tickets, gourmet dinners, wine tastings, and more!</i>	
STRATAFLIGHTED PAIRS (A/X=3000+/3000; B/C=2000/750)	2 p.m.
299ER PAIRS (300/200/100; 2 single sessions)	2 & 7:30 p.m.
49ER PAIRS (50/20/5)	2 p.m.
Jackpot! STRATIFIED OPEN PAIRS (2000+/2000/750)	7:30 p.m.

**SUNDAY, OCTOBER 26**

**Novice/Intermediate Lecture (Jeff Roman)	10:15 a.m.**
FLIGHTS A/X (3000+/3000) SWISS TEAMS & BRACKETED FLIGHT B TEAMS (0-2000)	11:00 a.m.
<i>B Teams Bracketed by Total Team Masterpoints; three overall places in each bracket Both Flights are 2-session events, w/ 1 hour break—on-site food available</i>	
299ER SWISS TEAMS (300/200/100; Single session)	11:00 a.m.
49ER SWISS TEAMS (50/20/5; Single session)	11:00 a.m.
299ER SWISS TEAMS (300/200/100; Single session)	3:30 p.m.

**DIRECTIONS:** From Route 50/Arlington Boulevard heading west from DC and Arlington AND from Route 495/Beltway: Continue on/Take Route 50 West about one mile outside the Beltway, and turn left at Javier Road (the second stoplight after the intersection of 50 and 495). Take an immediate right onto the access road that runs parallel to Route 50. The Elks Lodge will be two buildings down on your left—parking on the side and in the rear. From Fairfax, heading East on Route 50: Pass the intersection of Route 50 and Prosperity Avenue—the Prosperity Medical Center will be on your right. Between the first and second lights after Prosperity, turn right into the access road that runs parallel to Route 50 and look for the Elks Lodge immediately to your right—parking on the far side of the building and in the rear.

*Plenty of free parking! On-site snack bar plus lots of free treats! Many great restaurants nearby!*

*Championship Events and a Full Schedule of 299er Events for Novice and Intermediate Players!*

*Players with 0-5 Masterpoints play FREE in ALL games!*

**Mid-Chart Conventions permitted in all A/X & Open Stratified Events**

**Tournament Chair**  
Margot Hennings,  
703-560-0245

**Partnership Chair**  
Mary Ann Kral,  
703-437-0342 or  
NVBA cell: 703-869-0852

*...or check out our On-line Partnership "Desk" at [www.nvba.org](http://www.nvba.org)*

**All Saturday entry fees, including those for 0-5 players, include a \$1 per session surcharge to fund Washington NABC hospitality.**

# CRUISE ALERT, INC.

CLIA, IATAN, CRUISE SHOPPES, TRIP PROFESSIONALS

CLIA #00-35301-0

Sheila P. Targan, MANAGER

## Bridge Cruise for MD, VA & D.C.

8 Day:

Oct. 28 - Nov. 5, 2008

on the new and elegant

**CARNIVAL  
MIRACLE**

from Ft. Lauderdale

### MARK THESE DATES:

November 9-16, 2008

### 7 night Costa Culinary Cruise

Hosted by MARIA LIBERATI author of best selling "The Basic Art of Italian Cooking" Venice-Bari-Olympia-Izmir-Dubrovnik-Venice; Tournament Bridge available. Round trip VENICE. CALL FOR BROCHURE 301-651-9605.

March 15-25, 2009

### 15 nights HAWAII on Celebrity Mercury

Round trip San Diego 8 days tournament bridge with International Expert Ali Torcu, SAN DIEGO- HILO ( HI ). HONOLULU, LAHAINA ( HI ), MAUI ( HI ), ENSENADO MEXICO- SAN DIEGO. CALL FOR BROCHURE 301-651-9605.

June 13-23, 2009

### 10 day round trip ALASKA on SEA PRINCESS

Round trip San Francisco. 4 days at sea full tournament bridge directed by world expert ALI TORCUSan Francisco- 2 days at sea- Ketchikaj, AK, Juneau, AK, Icy Strait Point, AK, Tracy Arm, Ak, At sea, Victoria BC, At Sea-, San Francisco. CALL FOR BROCHURE 301-651-9605.

**CALL SHEILA OR BOB 301-651-9605**

Cruise Alert, Inc. Cell: 301-651-9605 (BOB) Office: 301-216-9846  
9713 Lookout Place Cell: 301-775-6531 (SHEILA) Fax: 301-216-2477  
Montgomery Village, MD 20886 email: Sheila.targan.travel@gmail.com

## THE GADGET-MATIST

by Barry Bragin, bbragin@comcast.net

"Grandpa wake up." The kids were tired of playing with their Wii and wanted to hear more about bridge history. "Grandma said you've napped long enough. Last time you told us how 2NT was used to help with constructive auctions after your partner opened 1NT and the opponents overcalled at the 2-level. What about Lebensohl over weak two's?"

"Well kids, you probably don't remember that weak two bids were popularized by **Al Roth** when he published his *Roth-Stone System* in 1953. In the years that followed, everyone moved away from strong two bids to these 'revolutionary' preempts. Part of the reason for their popularity was that no one knew how to compete after your opponent opened with a weak two. After partner doubles opener's 2♠ bid, how do you distinguish between xx/Qxxx/Jxx/xxx and xx/AQxxx/Qxx/xx? If you bid 3♥ with both hands, partner better be a good guesser when he has 17 HCP. Finally, someone got the bright idea that by giving up the natural meaning of responder's 2NT, you could distinguish between the weak (0-7 HCP) and invitational (8-10 HCP) responses."

### LEBENSOHL OVER WEAK TWO'S

After an opponent opens a weak two-bid and your partner makes a takeout double, your bid of 2NT is *Lebensohl*. It says nothing about notrump. It asks partner to bid 3♣, and you can then pass, sign off in a suit, or make another descriptive bid.

### Weak Hands (0-7 HCP)

The *Lebensohl* 2NT is most useful when you have a very weak hand and want to sign off in a suit that is lower in rank than the preemptor's suit. If your suit is higher in rank than the preemptor's suit (i.e., LHO opens 2♥ and you have spades), you make your "normal" minimum bid at the 2-level.

But if you would have to go to the 3-level to make a minimum bid in your suit, you start with 2NT to relay partner to 3♣. You can now pass if clubs is your suit, or bid another suit. The auction will go:

<u>LHO</u>	<u>Partner</u>	<u>RHO</u>	<u>You</u>
2♠	DBL	Pass	2NT
Pass	3♣	Pass	<u>Pass</u>
			(or 3♦ or 3♥)

The doubler will accept your relay with any hand of up to about 18 HCP, but he can refuse it if he has a very powerful hand. With a hand that will make game opposite an average of about 4-5 HCP in your hand, he should refuse the relay and make another descriptive bid. If he bids higher than 3♣, it is forcing; you must bid again, even if you are very weak.

### Medium-Strength Hands (8-10 pts.)

If you bid a suit at the 3-level (instead of using the 2NT sequence), it is encouraging, but not forcing. It shows a hand with constructive values, but not enough to jump to game. Doubler can pass with a minimum or bid on with extra values.

You can also use the *Lebensohl* 2NT to invite when your suit is higher in rank than the preemptor's suit. If LHO opens 2♥ and you have spades, you can sign off in 2♠ if you're weak. If you instead use the *Lebensohl* 2NT sequence, it shows invitational values (8-10 HCP). This full auction would be:

<u>LHO</u>	<u>Partner</u>	<u>RHO</u>	<u>You</u>
2♥	DBL	Pass	2NT
Pass	3♣	Pass	<u>3♠</u>

If LHO opened 2♦, you can use the sequence to invite in hearts or spades.

### Forcing Hands (11+ pts.)

The *Lebensohl* 2NT sequences above all show limited values. If you have forcing-to-game strength, your must either:

- Jump respond at the 3-level
- Q-bid
- Bid 3NT or higher.

#### Advanced Uses of Lebensohl

*Lebensohl* can be a beneficial addition to your system if you limit it to just the standard treatments above. If you want to adopt some more advanced uses of the convention, you can add special sequences to distinguish between different types of game forcing and slam invitational hands. Here's one approach, which you can simplify or expand to meet your preferences:

#### Game Auctions

- **Immediate 3NT** (2♥-DBL-P-3NT) = Good stoppers in the opponent's suit. Usually denies 4 cards in the other major.
- **Immediate Q-bid** (2♥-DBL-P-3♥) = Asks doubler to bid 3NT with a stopper. (This can also be used to start the description of a one-suited slam try — see below).
- **Immediate Imp Q-bid** (♥-DBL-P-4♥) = Both minors (if the weak-two was a major). If the opponent opened 2♦, a jump to 4♦ shows both majors.
- **Jump to 4 of a minor** (2♥-DBL-P-4♣/♦) = *Leaping Michaels* showing 5/5 in the bid suit and the other major.

The *Jump Q-bid* and *Leaping Michaels* are used with game values opposite a standard take-out double. See below for how to use *Lebensohl* to make a two-suited slam try.

#### Choice-of-Game Auctions

*Lebensohl* can help you improve your bidding accuracy when you have a good hand, but only four cards in the other major. Since the takeout doubler may have only 3-card support for your suit, it's helpful to give him specific information about your length in the other major and your stoppers in the opponent's suit. To do this, start with the *Lebensohl 2NT* (ostensibly showing a weak hand), and then follow with a Q-bid or 3NT:

LHO	Partner	RHO	You
2♥	DBL	Pass	2NT
Pass	3♣	Pass	3♥ or 3NT

- **Lebensohl 2NT, then a Q-bid** (3♥) = four cards in other major, but *NO* stopper in the opponent's suit.
- **Lebensohl 2NT, then 3NT** = four cards in other major *WITH* a stopper.

Both these auctions show forcing-to-game strength and give partner the choice of playing your suit or notrump.

#### One-Suited Slam Try

- **Q-bid, then 4 of a suit** = One long suit, slam-invitational values. This is used for a hand that's too strong for a simple jump to the 4-level. Your Q-bid (2♥-DBL-P-3♥) originally asks doubler to bid 3NT with a stopper, but if you then follow with a new suit at the 4-level (4♣, 4♦ or 4♠), it shows slam-try values with one long suit.

#### Two-Suited Slam Tries

*Lebensohl* can also be used to show a two-suited hand with slam-try (or better) values. To do this, you start with 2NT, then bid a new suit at the 4-level:

LHO	Partner	RHO	You
2♥	DBL	Pass	2NT
Pass	3♣	Pass	?

- **Lebensohl 2NT, then 4♣ or 4♦** = Two-suited slam-try with that suit and the other major — stronger than *Leaping Michaels*. (If the opponent opened a weak 2♦, *Lebensohl* followed by 4♥ or 4♠ shows that suit and the other minor.)
- **Lebensohl 2NT, then Q-bid at 4-level** (4♥) = Two-suited slam-try with both minors. (If the opponent opened a weak 2♦, *Lebensohl*-then-4♦ is a slam-try with both majors.)
- **Lebensohl 2NT, then 4♠** (after a 2♥ opening) = You can develop your own special meaning for this if you like. Since you can use the Q-bid-then-4♠ to show a one suited slam-try, the *Lebensohl*-then-4♠ sequence could be a slam-going hand that promises first round control of the opponent's suit.

## SEEKING MENTORS AND MENTEEES FOR WBL 0-300 MENTOR PROGRAM

by Gene Fisher, Genefi@comcast.net  
& Linda Marshall, Ldajmarshall@msn.com

During the first 3 fall unit games (September 4, 11, and 18), we will be collecting applications from all WBL members with fewer than 300 masterpoints desiring to be paired with a life master (LM) or similarly qualified player to help guide him or her in attaining the player's bridge goals. Unless otherwise requested, couples would generally be assigned to one mentor. Please look for the sign-up table on those dates, starting at 7:15 p.m. Having been a mentee 12 years ago (Gene), I can tell you the experience was a lot of fun, and extremely beneficial. We expect to have varying ways to have fun while learning bridge. If you've played the game for more than a week, you know that all of us are still learning bridge together. We plan an annual game for the mentor/mentee pairs to play together, and occasional social events. All interested parties should sign up, and we will do our best to find an appropriate mentor to work with each mentee. Each assignment will initially run for six months. If there are insufficient volunteer mentors, we will first assign mentors to mentees with fewer than 100 masterpoints.

All you have to do is sign up and answer a few questions about your goals in bridge, and a mentor will be assigned to you. Although you won't be able to play with them (each mentor is an A/X player with a busy schedule) you will be able to get answers to your important questions about:

1. Suggestions about bidding or play of any problem hands you have encountered

2. Events — why you should play in the Sectionals, Regionals, GNT, NAP, etc
  3. Bidding, bridge books, and hand evaluation
  4. ACBL procedures
  5. Hints for becoming a life master
  6. Other bridge resources
  7. Director calls-how to demystify, and make it a learning experience
- ...And many more topics.

For updates to the program, watch this column in the *WBL Bulletin* and visit the WBL website.

To assist the mentors and mentees, Don Berman, our webmaster, will add a separate link to the WBL homepage, entitled **Mentor Program**. It will include, among other things, a copy of this article and applications, answers to frequently asked questions, and suggested books for newer and intermediate players.

#### Action Items:

1. To be assigned to a mentor, please fill out the application and bring it to the Mentor desk on September 4, 11, or 18.
2. Talk this program up to existing members, past members, and future members.
3. **To volunteer to be a mentor**, or to give us any suggestions about the program, email one of us (Genefi@comcast.net)

**WASHINGTON BRIDGE LEAGUE  
BOARD & MEMBER RESPONSIBILITIES**

*May 2008 - May 2009*

or [Ldajmarshall@msn.com](mailto:Ldajmarshall@msn.com)), or talk to us at the unit game. **We will have sign-up forms available for mentor volunteers at the first 3 fall unit games.**

- Get involved in other ways, including social events or volunteering. Help from all players, including newer players, is

especially welcome at the WBL Sectional on August 7-10. To volunteer to help at the Sectional, contact **Barbara Summers** at [Jimbarb1184@aol.com](mailto:Jimbarb1184@aol.com).

*Life Masters and Near Life Masters: Please look for a form similar to this one at future games.*

**SIGN UP TO BE ASSIGNED TO A MENTOR**

Name \_\_\_\_\_ ACBL# \_\_\_\_\_

Phone: H: \_\_\_\_\_ O: \_\_\_\_\_

Address: \_\_\_\_\_

Email: \_\_\_\_\_

Occupation (former occupation if retired): \_\_\_\_\_

Age: \_\_\_\_\_ Interests: \_\_\_\_\_

Bridge goal \_\_\_\_\_

Under 300 mps? \_\_\_\_\_ Under 100 mps? \_\_\_\_\_

Special requests \_\_\_\_\_

- Awards** .....Fred King, Barbara Shaw
- Bridge in Schools** .....Ellen Rosenthal, Shawn Springer, Elaine Conway
- Bulletin Editor** .....Donna Rogall
- Bulletin Committee** ..Don Berman (Chair), Richard Ferrin, Donna Rogall, Steve Robinson, Nadine Wood
- Calendar of Obligations** .....Don Berman
- Car Pool Assistance** .....Don Berman
- Charity** .....Linda Marshall
- Cheer & Sympathy** .....Frances Burke
- Club Relations Committee** .....Ellen Cherniavsky (Chair), Carole Banks
- Conduct & Ethics Committee** ....Richard Ferrin (Chair), Ellen Cherniavsky (Board), Clyde Kruskal(Board), Noble Shore (elected '07), Peter Boyd (elected '07), Hadi Abushakra (elected '08 one year term), Barry Bragin (elected '08), John Edmonds (elected '08), Ron Zucker (elected '08)
- Education** ..Ellen Rosenthal, Clyde Kruskal
- Elections** .....Jim Allen (Chair), Richard Ferrin, Jim Geist
- Electronic Communications** .....Steve Robinson, Don Berman, Ted Ying
- Executive Committee** ....Fred King, Steve Robinson, Don Berman, Richard Ferrin
- Historian** .....Peter Boyd
- Membership Committee** .....Ellen Cherniavsky, Frances Burke, Ed Burke
- Membership Growth** .....Linda Marshall, Gene Fisher, Ellen Rosenthal, Carole Banks
- Membership Secretary** ....Frances Burke
- Novice Program** .....Shawn Stringer
- Ombudsman** .....Ann Lindley
- Parliamentarian** .....Richard Ferrin
- Player Achievement (Trophies)** Don Berman
- Publicity and Marketing** .....Linda Marshall, Clyde Kruskal, Charity Sack, Bob Levey
- Recorder** .....Don Berman

- Round Robin Committee** ..Steve Robinson, John Adams, Barbara Doran, Earl Glickstein, Dave Ruderman, Fred King, Bill Cole, Richard Ferrin (Chair), Arnie Frankel
- Scheduling** ...Fred King, Don Berman, Ted Ying, Chris Miller
- Special Events Coordination**
  - GNT (unit level) ...Ellen Cherniavsky
  - NAP (unit level) ...Ellen Cherniavsky
  - OTHER .....Ellen Cherniavsky
- STAC Coordination** ....Ellen Cherniavsky
- Tournaments**
  - COMMITTEE .....Nadine Wood (Chair), Richard Ferrin, Kitty Gottfried
  - CADDIES .....Kitty Gottfried
  - CHIEF DIRECTOR ....Millard Nachtwey
  - HOSPITALITY .....Kitty Gottfried
  - PARTNERSHIPS .....Barbara Doran
  - VOLUNTEERS .....Barbara Summers, Jim Geist, Clyde Kruskal
- Unit Game**
  - COMMITTEE .....Fred King (Chair), Clyde Kruskal, Don Berman
  - CADDIES .....Kitty Gottfried
  - CHIEF DIRECTOR .....Ted Ying
  - CHURCH LIAISON .....Fred King
  - FACILITY OPERATIONS ...Clyde Kruskal
  - HOSPITALITY ....Kitty Gottfried, Ellen Cherniavsky
  - ANNUAL MEETING .....Kitty Gottfried, Nadine Wood, Millard Nachtwey, Ellen Cherniavsky
  - HOLIDAY PARTY .....Kitty Gottfried, Nadine Wood, Millard Nachtwey, Ellen Cherniavsky
  - MANAGER .....Ted Ying
  - PARTNERSHIPS .....Barbara Doran
- Ways and Means Committee** ....Fred King (Chair), Don Berman, Barbara Ames, Steve Robinson
- Webmaster** .....Don Berman



3709 Center Way, Fairfax, VA 22033

703-391-7450 (PHONE) ♣ 703-391-7455 (FAX) ♦ 703-201-5132 (CELL)

Email: [Broker@RealtyToWeb.com](mailto:Broker@RealtyToWeb.com)



**Eva Klivington**  
Principal Broker  
VA, MD, DC

## Special Bridge Player Deal!

FOR CUSTOMERS ♥ SERVING VA, MD, DC

Trying to **Sell** your home? Want to **Buy** your dream home? Trying to **Find** the right real estate investment? **Foreclosures Bank Owned & HUD?**

Eva will list your property for 2% and if Eva sells, she will only charge you 3% total at settlement. If you purchase a home, Eva will credit you up to 1/3rd of Eva's commission at settlement.

We have successfully SERVICED MANY OF YOUR FELLOW BRIDGE PLAYERS. We will sell your home fast with our professional full service and offer you a great commission deal. View our web site 800,000+ MLS properties.

Curious to know how much your house is worth? Visit our web-site [RealtyToWeb.com](http://RealtyToWeb.com) or call for free no obligation Market Analysis.

### Bits & Pieces, continued from p. 5...

MD 20854. (Where Democracy Boulevard meets Falls Road.)

#### Tuesday 7:30-9:30 pm

<u>Classroom #1</u>	<u>Classroom #2</u>
Beginner Plus	Intermediate

#### Wednesday 10 am – Noon

<u>Classroom #1</u>	<u>Classroom #2</u>
Intermediate	Advanced

#### Wednesday Afternoon

<u>Classroom #1</u>	<u>Classroom #2</u>
12:30-3 pm	1-3 pm
Student Dup. Game	Beginner Plus

### Class Descriptions

*All classes will have different material!!* You can come to multiple classes and not have the same hands repeated.

Beginner Plus. Good for anyone who has taken Beginner Part 2 or higher. Topics include: Takeout Doubles, Preempts, Strong 2C Openers, etc. Review of basic bidding and play techniques for notrump as well as suit contracts.

Intermediate. Good for anyone who has taken Beginner Part 4 (Basic Conventions) or higher. Topics include: Forcing vs. non-Forcing bids, jumps, Stayman, Jacoby Transfers, Weak 2's, Takeout Doubles and lots of bidding. Intermediate play of the hand and defensive attitude signaling included.

Advanced. Learn to play "2/1 Game Forcing." The lesson topics (in order) will be: INT Forcing (2 weeks), 2/1 GF auctions (2 weeks), Roman Keycard Blackwood (2 weeks), Jacoby 2NT raises and Strong Jump Shifts by Responder (1 week each). Bring your lunch if you're staying for the 12:30 game.

Student Duplicate Game! All levels! If you are currently our student, you are invit-

ed to compete in an actual bridge game. Charlie will keep score and call out the winners of each level at the end of the game. (Note that you must stay for the entire game.) This is a fantastic way to get lots of practice at the table and meet other bridge fanatics. All levels welcome - beginner, intermediate and advanced. \$10 per person. Masterpoints awarded! Come early if you need a partner and we will try to match you up.

## WELCOME TO THE WASHINGTON BRIDGE LEAGUE

The WBL welcomes the following new ACBL members: **Dr Robert Elkin, Mr James Metzger, Taralee V Morgan, Dr Simon F Sellers, Ms Ellen S Bartelt, Mr Peter J Davis, Mrs Caroline S Despard, Mr Thomas E Joseph, Mrs Elena Manterola, and Mr Uli Werner.**

In addition, we welcome the following transfers from other units: **Robert D Abbo, Mrs Sonny F Adelson, Mr Thomas W Conley, Mrs Elaine K Cowles, Mr Jan D Baisden, Mary C Boynton, Mrs Miriam Freed, Mr Paul R Kimmel, Mrs Faustina L Lees, Mr John R Lees, Mrs Trudy D Machlin, and Ms Ramona Rhoades.**

Please join us at our weekly Unit Game on Thursday evenings and frequent the local bridge clubs in the area. Information can be found at [www.WashingtonBridgeLeague.org](http://www.WashingtonBridgeLeague.org).

## SATURDAY 0-200 GAME & MINI-LESSON

Every Saturday, the **Rockville Duplicate Bridge Club** holds a 0-200 game with a mini-lesson.

Mini-Lesson: Saturdays, 12:30 pm

0-200 Game: 1:00 pm

Cost: \$6.00

Location: St. James Episcopal Church  
11815 Seven Locks Road

Directions: Take Rt 270 to Exit 4B (from either direction) Montrose Road. This will take you to Seven Locks Road. Left on Seven Locks Rd 3 blocks. St James Church is on the left (going south), between Post Oak and Gainsboro Rd. There are two buildings, the game and mini-lesson are in the building on the left facing the church. There is plenty of parking in the rear, and a rear entrance to the building (1 flight of stairs if you enter from the rear of the building).

For additional information, contact **Mark Lavine**, 301-503-3348 or [mlavine@gcsii.com](mailto:mlavine@gcsii.com)



# NLM MASTER POINTERS

by I/N Columnist, Sandy Forsythe, [majslf@aol.com](mailto:majslf@aol.com)

## STILL MORE DOUBLE TROUBLE!

For those of you who have been paying attention (all three of you!), last time out I promised you a column about responding to negative doubles. But to know how to respond, you first need to know what the negative double means.

### General Principles about Negative Doubles

The negative double is used by *responder* after partner opens one-of-a-suit and RHO overcalls. (But note: a double is **not** negative if anyone has bid notrump, or after a Michaels cue-bid or unusual 2NT overcall.) The negative double's primary purpose is to help you and partner find your major suit fit. If one minor and one major have been bid, the negative double shows the unbid major, but it does not promise (or deny) length in the unbid minor. It also does not promise shortness in the opponent's suit, but it denies support for opener if he bid a major. With support for opener's major, responder should raise or cue-bid instead of doubling.

The negative double shows a hand that would have responded had there been no overcall...but that lacks either the strength or the suit length to bid after the overcall. *With one exception*, bidding a major after the overcall promises at least a five-card suit, and doubling shows a four-card suit. However, responder can double with a five-card major if he doesn't have enough points to bid at the level required to compete after the overcall.

### Strength Requirements for a Negative Double:

- 6 HCP at the 1-level
- 8 HCP at the 2-level
- 10 HCP at the 3-level

(These are *minimum* values. The negative double has no upper point limit.)

### Double to Show the Unbid Major

The classic use of a negative double is when partner opens a minor and you have four hearts. If RHO overcalls 1♠, you can't bid 1♥ anymore, but you still want to be able to find out if you and pard have a 4-4 heart fit. The negative double shows at least four hearts and 6 HCP (and says nothing about the unbid minor). 1♣ - 1♠ - X says, "I was going to bid 1♥, but either I'm not strong enough to bid at the two level or I don't have a five-card suit." Bidding any new suit at the two level requires 10+ HCP.

Negative doublers also use 1♣ - 1♥ - X to show *exactly* four spades and at least 6 HCP. With five spades, you'd bid 1♠ instead of doubling. The overcall gave you an extra tool that you didn't have before: a way to tell partner right away that you have five spades and she can support you with three.

1M - 2m - X (where M is a major and m is a minor) shows at least 8 HCP and at least four cards in the unbid major, and denies three-card support for partner. Bidding two of the unbid major instead of doubling shows 10+ HCP and a five-card (or longer) suit.

### When There are Two Unbid Majors

When there are *two* unbid majors, a double at the one level shows **both**. \* 1♣ - 1♦ - X promises four hearts and four spades and at least 6 HCP. If responder has only one four-card major, in this auction he must bid his suit instead of doubling. This is the one exception to the rule that when responder bids a major after the overcall, he's promising five. To understand why we let responder bid his suit when there are two unbid majors, consider the following auction:

1♣ - 1♦ - X - 1NT (or 2♦)  
2♠ - P - ?

If responder has a minimum hand and he doesn't have tolerance for spades, he's just gotten himself into a heap of double trouble!

However, at the two-level the double shows **one or both** majors:

1♦ - 2♣ - X promises 8+ HCP and a four-card major. And a plan! To make this double, responder also needs to have support for diamonds or extra values, or perhaps a club stopper, so he has a place to run if opener picks the wrong major.

### When There are Two Unbid Minors

1♥ - 1♠ - X shows 6+ HCP and one or both minors.

1♠ - 2♥ - X shows 8+ HCP and one or both minors.

You'd really like to be 4-4 in the minors to double after both majors have been bid, but in his book, *Negative Doubles*, Marty Bergen says you can do it with a good 5+ card minor if you don't have enough

points to bid your suit at the necessary level. He doesn't say what you're supposed to do if partner picks the wrong minor. As above, I would strongly suggest that you have tolerance for both minors or have a plan. Or find another bid! Sometimes you have to raise partner's major with just two...a seven-card fit is not the end of the world.

### Finally! Opener's Responses to the Negative Double

After the negative double, opener's rebids are natural...whenever possible. When the double is promising a major, opener should bid as though his LHO had passed and partner had bid 1♥ or 1♠. With four cards in pard's presumed major, opener should raise. A single raise is non-forcing and shows no extra values. A jump raise is invitational, and a cue-bid is forcing to game.

Without four cards in partner's major, make whatever bid best describes your hand. Opener's options are:

- Bid notrump with a stopper in the opponent's suit. This doesn't necessarily promise a balanced hand, but it does deny support for partner's major. With 18-19 HCP, jump to 2NT.
- Rebid a six-card suit, or a good five-card suit.
- Bid your second suit; pard may have support, especially if his double shows one

## STEPPING UP TO NEW HEIGHTS:

As of July 1, 2008

<b>Junior Masters (5 Masterpoints)</b>	<b>Sectional Masters (50 MPs)</b>
Mrs Willia F Eckerberg	Mr John R Horner
Mr H Bruce Edkins Jr	Mr Peter Schiff
Mr John H Jacobi	Henry L Thompson
Darlene J Merrill	Virginia Ivin
Jacqueline C Pender	Arthur V Millholland
Ernie Schuler	Lucille A Mostello
Mr Leonard M Sheeskin	Mrs Florence Shayne
Ms Geri Wood	<b>Regional Masters (100 MPs)</b>
Mr Mark R Conheady	Ms Lynne G Beresford
Mr Patrick M Frye	Dr Richard B Wedgewood
Peggy A Marshall	Mr Shyamalendu Pal
Mrs Georgette B Weiss	<b>NABC Masters (200 MPs)</b>
<b>Club Masters (20 MPs)</b>	Michael Berard
Isabelle M Thabault	Mrs Suzanne J Floyd
Guillaume Dedecker	Mr Calvin M Konner
Robert L Kerr	Mr Juan Pardo

or both minors instead of a major.

- Pass with enough strength in the opponent's suit to set them: four or five trumps with at least two honors at the two level.

*If none of the above are right for your hand...* You still have to bid! DON'T PASS if you're not going to set them. With a chunky three in partner's major, such as QJx or better, you can raise partner's suit. With two or a bad three in pard's suit, you might have to bid notrump even without a stopper in the opponent's suit. If it doesn't work out, tell partner that Marty Bergen made you do it: it's on page 24 of his book, *Negative Doubles*.

### Parting Thoughts

The number one misconception about the negative double is that it promises the two unbid suits. When one major and one minor have been bid, a negative double promises the unbid major ONLY!

For a far more detailed discussion of negative doubles than I could ever present here, read Marty Bergen's book, *Negative Doubles*. You can order the book from Marty by calling 1-800-386-7432. Mention this column and Marty will give you a big discount!

\* *Retraction:* in my March/April column, I said the double in this instance promises one major, not both. That was incorrect! I apologize for the error.



**WBL SOLVERS' CLUB'S  
NEW PROBLEMS**

**1) Matchpoints, None Vulnerable**

♠ KJ10♥ K54♦ J652♣ QJ4

<b>SOUTH</b>	<b>WEST</b>	<b>NORTH</b>	<b>EAST</b>
Pass	2♥	Dbl	Pass
?????	*No conventions		

**2) IMPs, You're Vulnerable**

♠ K742♥ AQ♦ KJ742♣ J6

<b>SOUTH</b>	<b>WEST</b>	<b>NORTH</b>	<b>EAST</b>
1♥	1♠	3♥*	3♥*
?????	*(weak)		

**3) IMPs, They're Vulnerable**

♠ J1087654♥ 76♦ -♣ AQ65

<b>SOUTH</b>	<b>WEST</b>	<b>NORTH</b>	<b>EAST</b>
?????	Pass	Pass	Pass

**4) IMPs, They're Vulnerable**

♠ J9732♥ J94♦ 53♣ K62

<b>SOUTH</b>	<b>WEST</b>	<b>NORTH</b>	<b>EAST</b>
3NT*	Pass	Pass	Pass

????? \*Gambling; solid minor no outside A or K; \*\*4diamonds is not a valid answer; If you bid clubs, partner will pass with clubs, else bid diamonds.

**5) IMPs, None Vulnerable**

♠ AK106♥ A765♦ 4♣ KJ65

<b>SOUTH</b>	<b>WEST</b>	<b>NORTH</b>	<b>EAST</b>
Pass	2♦*	Dbl	Pass**
Pass	Rdbl*	Pass	2♥
Pass	Pass	2♠	3♣
?????	* transfer **two hearts		

Return answers by August 5 to:

**Steve Robinson**  
2891 S. Abingdon St #A2,  
Arlington VA, 22206  
[robinswr@erols.com](mailto:robinswr@erols.com)

**NEED A RIDE OR A PARTNER  
FOR THE THURSDAY UNIT GAME?**

Contact **Barbara Doran** [UnitGamePartner@DistrictSix.org](mailto:UnitGamePartner@DistrictSix.org), (301-608-0347 between 9am and 10pm) to find a partner in advance or go to [www.washingtonbridgeleague.org](http://www.washingtonbridgeleague.org) to try the **On-Line Partnership Bulletin Board**. For a last minute partner, call the **WBL cell phone (301-395-2760)**.

**Don Berman, Carpool Coordinator** can be contacted at 301-776-3581 or ([don.berman@verizon.net](mailto:don.berman@verizon.net)) or log on to the **On-Line Carpool Notices** at [www.WashingtonBridgeLeague.org](http://www.WashingtonBridgeLeague.org).

*Good luck! We look forward to seeing you on Thursday evenings.*