

www.WashingtonBridgeLeague.org



Washington Bridge League

Jan/Feb 2004

B * U * L * L * E * T * I * N

THURSDAY, JANUARY 8

- ♣ Stratified Open Pairs (unlim/2000/750)10:30am

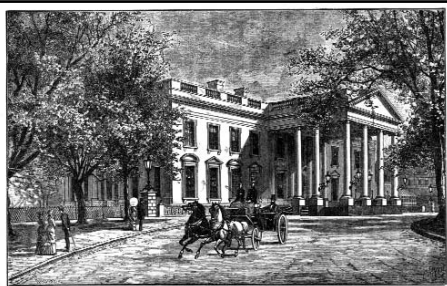
Washington Bridge Center,
1620 Elton Road, Silver Spring MD

- ♦ StrataFlighted Open Pairs (A/X unlim/3000, B/C Separate 1500/500), Stratified 199er Pairs & 0-20 Pairs (Christ the King Church only), Stratified 99er Pairs (Beth El only)

Beth El Congregation, 3830 Seminary Rd, Alexandria7:00pm

Christ the King Church, 2301 Colston Drive, Silver Spring7:30pm

Capital Beltway to Connecticut Ave. South. Left on East-West Hwy. Right on Grubb Rd. 1st left on Colston. The church is one block on the left.



♥ **Party** ♥
to Honor **New Life Masters**
after Friday Night's Game

♦ Friday held at Christ the King Church Only ♠ FRIDAY, JANUARY 9

- ♥ Stratified Open Pairs (unlim/2000/750) (single sessions)10:00am, 2:00pm
- ♣ StrataFlighted A/X Pairs (unlim/2000) & B/C/D Pairs (2000/1250/750)7:30pm
- ♠ Intermediate/Novice Pairs (300/200/100/50/20) (single sessions)10:00am, 2:00pm, 7:30pm

♣ ♦ Remainder of Tournament held at Newport Mill Middle School Only ♥ ♠

11311 Newport Mill Road, Kensington MD

Capital Beltway to Georgia Ave North (Exit 31 – State Hwy 97) go 1.7 miles & bear left onto Veirs Mill Rd. (State Hwy 586). Go north 1.1 miles and turn left on Newport Mill Rd. School will be on the left.

SATURDAY, JANUARY 10

- ♦ Stratified Open Pairs (unlim/2000/750)9:30am
- ♣ Newcomer Pairs (0-5 MPs)1:30pm
- ♦ StrataFlighted A/X Pairs (unlim/2000) (single sessions)1:30pm, 7:00pm
- ♥ StrataFlighted B/C/D Pairs (2000/1250/750) (single sessions)1:30pm, 7:00pm
- ♠ Intermediate/Novice Pairs (300/200/100/50/20) (single sessions)1:30pm, 7:00pm

SUNDAY, JANUARY 11

- ♣ A/X Swiss Teams, VPs (unlim /3000)10:30am & TBA
- ♦ B/C/D Swiss Teams, VPs (2000/1250/750)10:30am & TBA
- ♥ 300/100/50 Swiss Teams, VPs (single sessions)10:30am, 2:30pm

♠ Full Schedule of Intermediate and Novice Events ♥



I/N events: 199er, 99er, 49er, & 0-20; Stratification at Director's Discretion.
Open Stratified and StrataFlighted Events vary as listed above.

Washington Hospitality includes snacks and drinks for all players every day. **Sunday Lunch** provided between sessions free of charge. **Chairs: Kathy Hilbers**, (202) 662-3430, elfenq@hotmail.com, **Nadine Wood**, (301) 565-9555, woodthere@erols.com. **Volunteer Coordinator: Steve Forsythe**, (301) 592-9177, majself@aol.com. **Hospitality: Kitty Gottfried**, (301) 587-3981, kgottfried@hotmail.com. **Partnerships: Charity Sack**, (703) 963-7027, charity@charitysack.com, **On-line Partnership Desk:** www.WashingtonBridgeLeague.org.

SUGGESTION BOX

Do you have a suggestion that might help to increase membership or otherwise improve the Washington Bridge League? Give any and all ideas to Don Berman, 301-776-3581, don.berman@verizon.net, 13707 Engleman Dr., Laurel, MD 20708, or www.WashingtonBridgeLeague.org.

WBL OMBUDSMAN

Any player with helpful director issues including criticism or praise of the directing staff may contact the Ombudsman, Ann Lindley and be assured that the source of the information will remain confidential. Information should be provided in writing and may be handed to her at any game, or mailed to her at 18518 Grackle Way, Gaithersburg, MD 20879-1767.

◆◆◆◆ ~~~~~ ◆◆◆◆

DEADLINE: JANUARY 30, 2004

TO SUBMIT NEW ARTICLES TO THE EDITOR FOR THE MARCH/APRIL 2004 ISSUE

***Washington Bridge League* BULLETIN (usps #861-240)**

VOL. 62, #1 — SUBSCRIPTION \$2 PER YEAR FOR MEMBERS OF UNIT #147 (INCLUDED IN ACBL ANNUAL DUES). NON-MEMBER SUBSCRIPTION RATE IS \$21 FOR THREE YEARS. PUBLISHED BI-MONTHLY BY THE WASHINGTON BRIDGE LEAGUE AT 14517 PERRYWOOD DRIVE, BURTONSVILLE, MD 20866. SECOND-CLASS POSTAGE PAID AT BURTONSVILLE, MD. POSTMASTER: SEND ADDRESS CHANGES TO WASHINGTON BRIDGE LEAGUE BULLETIN, ACBL, 2990 AIRWAYS BLVD., MEMPHIS, TN 38116-3847. ALL EDITORIAL AND GENERAL CORRESPONDENCE SHOULD BE DIRECTED TO THE EDITOR AT 901 CLIFTONBROOK LN., SILVER SPRING, MD 20905-3711.

Editor — Donna Rogall (301-421-9615), drogall@erols.com

I/N Columnist — Vince Wilmot (301-990-0303), vwilmot@erols.com

Columnists — Steve Robinson, Richard Colker, Clyde Kruskal, Jim Allen, Barbara Shaw

The opinions expressed by our columnists do not necessarily reflect the opinion of the ACBL, the WBL, or even the editors of this publication. The WBL is not responsible for the claims of its advertisers.

Dick Wegman, *President* — (301-365-2228), aliweg@aol.com

Fred King, *Vice President* — (703-536-1914), the5kings2@aol.com

Steve Robinson, *Treasurer* — (703-379-4371), robinswr@erols.com

Barbara Shaw, *Secretary* — (301-598-3339), BarbShaw@comcast.net

Barbara Doran, *Past President* — (301-608-0347), xbarbd@mindspring.com

UNIT DIRECTORS

Don Berman — (301-776-3581), don.berman@verizon.net

Dr. Steve Forsythe — (301-592-9177), majs1f@aol.com

Robert Gunnell — (703-402-5524), indiblue33@hotmail.com

Ben Laden — (202-244-1765), benladen@prodigy.net

Barbara Summers — (301-598-5838), jimbarb1184@aol.com

Ron Zucker — (202-965-3357), ron@motherzucker.com

SOME KEY VOLUNTEERS

Kathy Hilbers — *Tournament Co-Chair* (202-662-3430)

Nadine Wood — *Tournament Co-Chair* (301-565-9555)

Frances Burke — *Membership Secretary* (301-384-6103)

Michael Carroad — *Unit Game Chief Director and Manager* (301-322-4289)

Barbara Shaw — *Unit Game Partnerships* (301-598-3339)

Charity Sack — *Tournament Partnerships* (703-963-7027)

Kitty Gottfried — *Unit Game and Sectional Hospitality* (301-587-3981)

WBL WEBSITE:
www.WashingtonBridgeLeague.org

DISTRICT 6 SITE:
www.districtsix.org

CONTENTS

ARTICLE	PAGE
President's Letter <i>by Dick Wegman</i>	2
57th Annual City of Washington Tournament — Mar. 4-7, 2004	3
Bits and Pieces...	
2004 Unit KOs deadline Jan. 22, Welcome to the WBL, Has Your Phone Number Changed in the Last Few Years?, Partnerships and Carpools	4
2003-2004 WBL-NVBA Player of the Year, Club News,	5
Grand National Teams 2003-4	6
WBL Solvers' Club <i>by Steve Robinson</i>	7
Solvers' Club's New Problems	12
Thursday Night Unit Game...	
2003 Trophy Race Standings <i>by Webmaster, Don Berman</i>	14
0-20 Game & Lesson Thursday Nights	14
Schedule, Map, Partners Guaranteed , Carpools	15
Committee Action XLIV <i>by Rich Colker</i>	17
"The Survey Says...	19
New Orleans Fall 2003 NABC- Local Winners Results	22
70th Annual D.C. Championships - Results	23
NLMasterPointers <i>by I/N Columnist, Vince Wilmot</i>	28
Volunteers Wanted	29
Area Bridge Class Offerings	29
NVBA William Poissant Memorial Tournament — Feb. 19-22, 2004 . .	back cover



PRESIDENT'S LETTER

by WBL President, Dick Wegman

The vitality of an organization such as ours depends on new players who join our unit and on players who achieve a level of skill worthy of recognition by the ACBL. I'm pleased to report that 2003 has been a very good year for the WBL on both fronts.

As many of you may know, we now have thriving group of new duplicate players who come every Thursday evening to the unit game. They are attending **Steve Forsythe's** 0-20 program for beginning bridge players and for more experienced social bridge players. Steve is an Air Force officer in operations research stationed at the Pentagon, and he began teaching bridge four years ago. Steve uses an "Instant Bridge Player" program that he designed, and he and his wife Sandy cover basic bidding and playing techniques that enable newcomers to start playing bridge quickly. The teaching is so effective that most of the students are playing duplicate bridge by their second session.

Anyone can join the program at any time. Steve works one-on-one with a new player who has just joined until he or she is ready to play with the rest of the group. As players acquire basic bidding and playing skills, they "graduate" after they win 20 master points and move on to play in the 199er game. The Instant Bridge Player program has become quite popular, and Steve's game now boasts six or seven tables every Thursday evening.

If you know of someone who might be interested in joining the program, please bring him or her with you on any Thursday evening — there is no need to register in advance. If anyone needs more information, they can reach Steve at 301-592-9177, or by e-mail at majslf@aol.com.

I'm also delighted to be able to welcome 26 new life masters who have won their gold pin over the past 12 months. This is one of the largest group of new life masters that we have had in the WBL in recent years. Please join me in welcoming them at our new life master party, to be held after the Friday evening game on January 9th at the Presidential Tournament. Our new life masters are Suzanne Abrams, Carole Banks, Howard Bender, Faye Burke, Michelle Contave, Joana Da Silva, Betsy Depristo, Bess Eastin, Leonid Fastovsky, Sandra Forsythe, Willa Garner, Susan Graham, Maurice Greenman, David Hamilton, David Harris, Nancy Jose, Charles King, Marshall Kramer, John Laurim, John Lowe III, Helene Oliver, Martin Reed, Mark Rosen, Penny Stover, Howard Tash and Lynn Weidman. Congratulations on a job very well done!

We're looking forward to a great year for WBL games and tournaments in 2004. I hope I'll see you there.

Dick Wegman

57th Annual City of Washington Tournament

THURSDAY, MARCH 4

♣ Stratified Open Pairs (unlim/2000/750)10:30am
Washington Bridge Center, 1620 Elton Road, Silver Spring MD

♦ StrataFlighted Open Pairs (A/X unlim/3000, B/C Separate 1500/500),
 Stratified 199er Pairs & 0-20 Pairs (Christ the King Church only), Stratified
 99er Pairs (Beth El only)

Beth El Congregation, 3830 Seminary Rd, Alexandria 7:00pm

Christ the King Church, 2301 Colston Drive, Silver Spring 7:30pm

Capital Beltway to Connecticut Ave. South. Left on East-West Hwy. Right on
 Grubb Rd. 1st left on Colston. The church is one block on the left.



♦ **Friday held at Christ the King Church Only** ♠

FRIDAY, MARCH 5

♥ StrataFlighted A/X Pairs (unlim/2000) & B/C Pairs (1000/500)10:00am

♠ StrataFlighted A/X (unlim/2000) & B/C/D Pairs(2000/1250/750) (single sessions)1:30pm, 7:30pm

♣ Intermediate/Novice Pairs (300/200/100/50/20) (single sessions)10:00am, 1:30pm, 7:30pm

♣ ♦ **Remainder of Tournament held at Newport Mill Middle School Only** ♥ ♠

11311 Newport Mill Road, Kensington MD

Capital Beltway to Georgia Ave North (Exit 31 – State Hwy 97) go 1.7 miles & bear left onto Veirs Mill Rd. (State Hwy 586). Go north 1.1 miles and turn left on Newport Mill Rd. School will be on the left.

*“Hey, mah...
 Check out the special March Island Hospitality we are givin’ to you.”*

SATURDAY, MARCH 6

♦ StrataFlighted A/X Pairs (unlim/2000) & B/C Pairs (1000/500)10:00am

♣ Intermediate/Novice Pairs (300/200/100/50/20) (single sessions)10:00am, 1:30pm, 7:00pm

♦ StrataFlighted A/X Pairs(unlim/3000) (single sessions)1:30 pm, 7:00pm

♥ StrataFlighted B/C/D Pairs (2000/1250/750) (single sessions)1:30pm, 7:00pm

♠ Newcomer Pairs (0-5 MPs)1:30pm

SUNDAY, MARCH 7

♣ A/X Swiss Teams, VPs (unlim /3000)10:30am & TBA

♦ B/C/D Swiss Teams, VPs (2000/1250/750)10:30am & TBA

♥ 300/100/50 Swiss Teams, VPs (single sessions)10:30am, 2:30pm

♣ **Full Schedule of Intermediate and Novice Events** ♥



I/N events: 199er, 99er, 49er, & 0-20; Stratification at Director's Discretion.

Open Stratified and StrataFlighted Events vary as listed above.

Washington Hospitality includes snacks and drinks for all players every day. **Sunday Lunch** provided between sessions free of charge. **Chairs: Kathy Hilbers**, (202) 662-3430, elfenq@hotmail.com, **Nadine Wood**, (301) 565-9555, woodthere@erols.com. **Volunteer Coordinator: Steve Forsythe**, (301) 592-9177, majslf@aol.com. **Hospitality: Kitty Gottfried**, (301) 587-3981, kgottfried@hotmail.com. **Partnerships: Charity Sack**, (703) 963-7027, charity@charitysack.com, or, try the easy **On-line Partnership Desk: www.WashingtonBridgeLeague.org**.

BITS AND PIECES

UNIT KNOCKOUTS 2004

SIGN UP BY JAN. 22

The 2004 Unit Knockouts, which are scheduled by the teams involved to be played at either a home or club, will be either a single or double elimination format to be determined from majority preferences. Teams can be made up of four to six player. Sign your team up by January 22, 2004 with Steve Robinson (robinswr@erols.com or 703-379-4371). For help in forming teams, contact a Partnership Coordinator, or try the On-Line Partnership Desk (see below).

WELCOME TO THE WASHINGTON BRIDGE LEAGUE

The WBL welcomes the following new ACBL members: **Ms Karen Almgren, Barbara Bresentine, Dr. Neil A Crane, Francie Gingrich,**

Trevor J Houghton, and Laura G Wyman.

In addition, we welcome the following transfers from other units: **Mr Ronald A Burt, Mary L Butler, Mrs Wonjoo Goldstein, Ms Billie Sandler, Mr Noble Shore, Ms Janeth M Welch, Dr Lester C Welch., Uzi Yaari, Mr Bob Zorn, and Mrs Jonann E Zorn.**

Please join us at our weekly Unit Game on Thursday evenings and frequent the local bridge clubs in the area. Information can be found on our website, www.WashingtonBridgeLeague.org.

HAS YOUR PHONE NUMBER CHANGED IN THE LAST FEW YEARS?

If your phone number has changed, even if it changed a long time ago, it's very likely that the ACBL doesn't have it, even if they

PARTNERSHIPS AND CARPOOLS

Need a Partner or a Carpool for Unit Games or Tournaments?

Players who would like assistance can obtain help either on-line or by contacting one of the WBL's partnership coordinators or Don Berman, the carpool coordinator.

(1) **On-Line Partnership Desk.** The WBL has established an on-line partnership desk on its web site (www.washingtonbridgeleague.org). The WBL is the first unit in the country to do this. Sign up, indicate which events you are available for, and find out if other players are available for the games you wish to play in. Simply log on to the WBL website and click on the partnership desk. Please give it a try.

(2) **Partnership Coordinators.** For those who prefer assistance in person, three people have volunteered to help players find partners in advance of the unit game or sectional events. For the unit game, Barbara Shaw will assist players in Flights A/X (BarbShaw@comcast.net; 301-598-3339). Charity Sack will assist players in Flights B/C/D for the unit game, and all players for the sectionals (charity@charitysack.com; 703-963-7027). Please let them know as early as you can what game or events you would like to play in.

(3) **On-Line Carpool Notices.** Post your requests and look at others at the WBL website. To post requests, send an e-mail to the Web Master (don.berman@verizon.net). Include your name, when you need a ride (either a specific date or a general request, e.g., all unit gmes), and how to contact you (E-mail or phone numbers).

(4) **Don Berman, Carpool Coordinator** can also be contacted at 301-776-3581.

Good luck, and we look forward to seeing you on Thursday evenings and at the WBL sectionals.

have your correct address. If they have your old number, the new WBL Directory will print the wrong number because we get our listings directly from them. Update your changes with the ACBL at their website: www.acbl.org, by snail mail at ACBL, 2990 Airways Blvd., Memphis TN 38116-3847, by e-mail to Service@acbl.org, or by phone at 1-800-467-1623.

**2003-2004 WBL-NVBA
PLAYER OF THE YEAR**

Eligibility

Players must attend at least three WBL and three NVBA sectionals during the contest period (September, 2003, through April, 2004). Points won on Tournament Thursday evenings are included in the totals, but do not count towards eligibility.

Awards

Two trophies will be awarded.

Standings

Here are the standings after four of eight Sectionals. The asterisk* indicates that the player has met eligibility requirements.

Open Leaders

<u>Player</u>	<u>Points</u>
1 Leo LaSota	72.10
2 Mark Shaw	59.14
3 Yi Zhong	57.91
4 Steve Robinson	54.34
5 Kenneth Davis	49.49
6 Mita Banerjee	46.42
7 Alfred Steinberg	41.90
8 Hailong Ao	40.83
9 William Cole	39.31
10 Fred King	37.24
11 Barbara Shaw	36.70
12 Richard Ferrin	33.01
13 John Lawrence	31.47
14 Weizhong Bao	31.37
15 Eugene Kales	30.92
16 Frank King Jr	30.31
17 John Ashe	29.66
18 Lloyd Rawley	29.47
19 Robert Gookin	29.44
20 Ed Lewis	28.38

NonLM Leaders

<u>Player</u>	<u>Points</u>
1 Paul Krueger	14.05
2 Wanda Avila	13.99
3 Christon Johnson	11.70
4 Robert Boorman	11.70
5 Stephen Mac Arthur	10.29
6 Danut Gliga	10.16
7 Marshall Kramer	9.86
8 Gloria Halstead	9.05
9 Anne Derbes	8.95
10 Robert Schwab	8.95
11 Ali Al-Aref	8.03
12 Namik Haveric	7.70
13 Mirsad Mujezinovic	7.70
14 Susan Strauss	7.27
15 Neal McKinney	7.12
16 Samuel Bowlin	7.05
17 Madeline Delahan	7.00
18 Franz Delahan	7.00
19 Thomas Gallagher	6.59
20 Rex Settle	6.47

CLUB NEWS

Laurel Bridge Club

NEW YEAR'S EVE GAME

The Laurel Bridge Club will host a pot luck dinner and bridge game on NewYear's Eve. Dinner will begin at 7 PM and the game will begin around 8 PM.

Beer, wine, soda and champagne will be provided. The cost is \$8 for everyone who brings a dish and \$10 for those who don't. Contact Rose Berman or Mary Dresser for more information.

Suit Yourself Forest Glen Bridge Club

The new year is fast approaching, so here's our new schedule, at last! Our schedule for the first half of 2004 includes two open/pro-am games...details to follow as we get closer to those dates.

The schedule: 3 Jan, 7 Feb, *14 Feb, 20 Mar, 3 Apr, *17 Apr, 8 May, 5 June.

*Open/Pro-Am

HAPPY NEW YEAR!

Steve & Sandy

Washington Bridge Center

OVERHEARD AT THE CLUB

"I don't want to be difficult but you really shouldn't bid like that."

"My bids usually mean what they say but sometimes I have to just bid in order to keep it open."

"I don't mean to bid unusually but sometimes I just forget."

"It's my fault, I forgot to remind you so you wouldn't forget."

"Okay, I'll play with you again, but this time don't forget to say "no spades" when I try to revoke."

"Well, that's the way Mark Shaw plays it. I thought I would try part of his system. I guess I should have told you."

Really pithy remarks are encouraged. Please send your suggestions for publication to "Editor - Overheard." Contact information is listed on the inside front cover.

GRAND NATIONAL TEAMS 2003-2004

The District finals get underway for Flights B and C in February, the Open Flight in March, and the Flight A in May. All interested participants must have qualified at the club stage. Check your local clubs for their schedules of qualifying games. District winners go on to represent District 6 in the New York City Summer 2004 Nationals.

All teams must pre-register by the date shown below for their flight. Pre-register your team by the due date shown below by sending Rae Dethlefsen (11232 Chestnut Grove Sq #335; Reston, VA 20190) a list of your team members (player numbers helpful), designation of the Flight you are competing in, and a check for \$88.00 (made out to District 6).

The Open and Flight A are only being held in the northern part of the District. The first weekend of Flights B and C are being

held at separate northern and southern sites. This year, Flights B and C are being held on the same weekend at both sites.

Open

Pre-RegistrationMarch 11
1st WeekendMarch 13-14
2nd WeekendApril 24-25

Flight A, 0-5000 MPs

Pre-RegistrationApril 29
1st WeekendMay 1-2
2nd WeekendMay 15-16

Flight B, 0-2000 MPs

Pre-RegistrationFebruary 26
1st WeekendFebruary 28-29
2nd WeekendMarch 13-14

Flight C, Non-LMs 0-500 MPs

Pre-RegistrationFebruary 26
1st WeekendFebruary 28-29
2nd WeekendMarch 13-14

Starting time for all events for the first Saturday is 12:30 pm; remaining sessions are TBA.

The Evergreen Society of Johns Hopkins University starts its spring semester on February 24th at its **Montgomery County campus**. EVERGREEN was created to enhance the leisure time of semi-retired and retired persons by providing stimulating learning experiences. Classes are held on Tuesdays, Wednesdays and Thursdays during two twelve week semesters - fall and spring. Students may choose any mix of small discussion groups and/or larger lecture classes. All classes are two hours in length and held during the day.

There are a large selection of course options for the spring. For more information on specific course offerings or general information, please call **301-294-7058** or access the web sit at www.evergreen.jhu.edu.

EVERGREEN annual dues which cover two semesters are \$465.

WBL SOLVERS' CLUB

Moderated by Steve Robinson

robinswr@erols.com

Congratulations to Dave Smith who came in first with a score of 480. He wins a free entry to the Unit Game and will be invited to be on a future panel. Second was Lyle Poe with a score of 470. Third was Bernie McCurdy with a score of 450. Tied for fourth were Joyce Neville and Kent Goulding with a score of 440. Sixth was Kevin Avery with a score of 430. Tied for seventh were Richard Ferrin, Barbara Israel, Rick Eissenstat and John Ferman with a score of 420. Tied for eleventh were Nikola Tcholakov, Betsy Wilson, Don Berman, Randy Thompson and Bob Klein with a score of 410. Tied for sixteenth were Ken Kaufman, Hy Chansky, Tracy Brines, Jim Adams, Mike Lawrence, Leon Letwin and Millard Nachtwey with a score of 400. The average score of the 243 solvers was 326. The average score of the experts was 421.

All readers are encouraged to send answers and/or new problems to Steve Robinson, 2891 S. Abingdon St. #A2 Arlington, VA, 22206. In addition to the winner receiving a free play at the WBL Unit Game, Steve will play with anyone who gets a perfect score or who exactly matches all five of his answers. If you send a self-addressed stamped envelope to the above address along with your answers, Steve will send you a copy of the new problems to ensure that you can meet his next deadline. You can pick up a copy of the problems at the WBL Unit Game in Maryland, and can send answers or requests for problems to robinswr@erols.com. WBL Solvers Club uses *Washington Standard* as published July 1996.

The book *Washington Standard* second edition is out. If you are a serious bridge player, this book is a must. You can purchase a copy from Steve for \$25.00 at the Unit Game and at tournaments or can send him a check for \$28.95 that includes \$3.95 for priority mail.

1) Matchpoints, None Vul

♠3♥AK1054♦AK♣AK943

SOUTH	WEST	NORTH	EAST
????			3♦
<u>Action</u>	<u>Score</u>	<u>Votes</u>	<u>Solvers</u>
4NT	100	1	22
3NT	80	1	26
4♥	80	3	19
Double	60	3	109
4♦	60	2	36
3♥	50	0	21
5♦	20	0	2
6♦	20	0	1
5♥	20	0	2
4♣	20	0	1
Pass	20	0	2
3♠	20	0	1
6♥	20	0	1

How do you show a very good hand with hearts and clubs? Some experts tried 4♦ but 4♦ shows both majors. What are they going to do when partner bids 4♠? Bid 5♣. Couldn't that be a spade slam try? ♠AKxxx♥AKQxx♦x♣Ax for instance. Some experts doubled but when partner bids spades, their club or heart bid will not show five of the other suit. Since double shows tolerance for spades, partner is going to rebid his five-card suit. How is double going to get you to the correct club or heart strain? I like 4NT showing the two lowest unbid suits. How bad can that be?

Two experts bid Michaels which shows both majors. Its very difficult to convince partner who heard your 4♦ bid, which conventionally shows five or more spades and five or more hearts, that you have only one spade.

Cappelletti: "4♦—No choice - if I double I can not expect to show a strong two-suiter. I expect the auction to proceed 3♦-

4♦-P-4♠-P-6♣ by me showing two suits; hope partner has either some length or a useful card.”

But why not bid 4NT showing clubs and hearts?

Hopkins: “4♦—The old way to bid this hand was to cuebid and if partner bid the wrong suit, to cuebid again. I hope my partner remembers. I can’t think of anything else to do.”

Three experts double. They violate the rule — Don’t make a takeout double without support for unbid majors.

Humphreys: “Double—This hand is way too good to overcall 3♥. I considered 3NT, but this takes hearts out of the picture. I will rebid 3NT over partner’s spade bid. This should show a big hand with no spade tolerance, since I would just bid 3NT with a balanced hand of this strength. Sure, I could just take my six tricks, but that would be pretty unlucky.”

Double followed by 3NT shows tolerance for all suits. If you want to play 3NT, you bid it directly.

Woolsey: “Double—If partner tries to insist on spades, I am strong enough to bid both of my suits and hopefully get to the right contract. I don’t see any other way to start.”

Parker: “Double—I can’t think of another bid that will give us a chance for finding the best contract. 3NT is out, too strong, overcalling either suit might lose the other one and understates the strength. Cuebidding will almost surely get 4♠ and then everything else sounds like a cuebid. So I will double and pull 3♠ to 4♣ which should get both suits into the picture.”

Only four experts make a bid which does not imply having spades. At least if their partner bids spades, their partner will have spades. Three of those experts bid 4♥.

Adams: “4♥—Double and 4♦ are out, because they show different kinds of hands. Yes, I know we can be cold for slam in clubs, but how to find it I have no idea. Even if hearts is the wrong spot, will still probably make.”

King: “4♥—I can’t double with a singleton spade and I have to make a strong bid. Of course, 4♥ could be going down and we could be cold for 6♣, but I think this is the best starting bid.”

Schwartz: “4♥—Ugh. Might try 4NT if my AK wasn’t in diamonds. Don’t like 3NT as they are just too likely to lead a spade.”

Roman: “3NT—A tough problem, but partner is just too likely to insist on spades if we start with double.”

Over 3♦, 4♦ shows both majors, 4NT shows clubs and hearts. There is no bid to show clubs and spades.

2) Matchpoints You’re Vul

♠J1065♥85♦973♣AKQ8

<u>SOUTH</u>	<u>WEST</u>	<u>NORTH</u>	<u>EAST</u>
Pass	1♦	1♥	Pass
????			
<u>Action</u>	<u>Score</u>	<u>Votes</u>	<u>Solvers</u>
1NT	100	8	52
1♠	50	1	85
2♣	40	1	36
Pass	40	0	48
2♦	20	0	14
2♥	20	0	5
3NT	20	0	1
2♠	20	0	1
3♦	20	0	1

How do you advance in a situation where there is no clear-cut advancing bid available? 1♠ and 2♣ both show five-card suits, a raise to 2♥ shows three and 1NT shows a diamond stopper. Which white lie do you tell? Since partner could have 16 HCPs, you can’t pass so what’s your poison?

Two experts bid their four-card black suits. Works if partner has four-card support or a strong heart suit that he rebids but you would be anxious if your bid ended the auction.

Cappelletti: “1♠—Keep it low and hopefully simple”

Parker: “2♣—If it is not our hand I want a club lead. If it is our hand, partner’s next bid will allow me to do something intelligent, I hope!”

Seven experts agree with me and bid notrump. Who needs a stopper?

Adams: “1NT—With my wife I can bid 1♠ and only show four, but the world is different. Pass too wimpy. I show a stopper, but this is a situation where partner knows to tread carefully before bidding 3NT.”

King: “1NT—My hand is too good to pass. My spades are too weak to bid. I could bid 2♣ although I should have another club, or I can bid 1NT which lacks a stopper, but seems the best way to show this hand.”

Woolsey: “1NT—In my book a 1♥ overcall virtually denies four spades, since with five hearts and four spades he could double and then bid hearts — equal level conversion. The balanced hand looks perfect for notrump. About the diamond stopper — well, maybe partner will have one.”

Roman: “1NT—Yes, a diamond stopper would be nice, but I accurately and cheaply describe the range and nature of my hand to partner and listen to what he has to say for himself.”

But maybe partner has four spades but not enough to double. ♠Qxxx♥AKxxx♦xx♣xx for example.

Hopkins: “1NT—This shows 8-10 balanced. Guess what I have. And, of course, if I get a vicious double, I can rethink my position.”

Humphreys: “1NT—New suit by advancer should show no tolerance for the overcall suit and typically five cards. A good partner will have a diamond stopper.”

Schwartz: “1NT—Too much to pass and what would I do if LHO rebids 2♦? Will be well placed if partner takes another bid.”

When you have the correct strength for 1NT, the lack of a stopper should not deter you from bidding it.

3) Matchpoints You're Vul

♠K2♥KQ4♦973♣K8765

<u>SOUTH</u>	<u>WEST</u>	<u>NORTH</u>	<u>EAST</u>
Pass	Pass	1♠	Pass
1NT	Pass	2♥	Pass
????			

<u>Action</u>	<u>Score</u>	<u>Votes</u>	<u>Solvers</u>
2♠	100	4	24
2NT	80	3	63
3♥	70	2	74
3♠	50	1	26
3♣	20	0	34
3NT	20	0	4
4♠	20	0	1
Pass	20	0	6
4♥	20	0	9
3♦	20	0	2

You have a very good passed hand but there is no obvious eight-card fit. Do you go low by bidding 2♠, or do you get aggressive by raising hearts or bidding 2NT.

Three experts agree with me and take the low road. If partner has extra values he's allowed to bid again. Partner's in third seat and could have a bad hand. One should not base his bidding solely on the possibility of a light third hand opener but even if partner has a normal opener, 2♠ could be the limit. Give partner ♠A10xxx♥AJxx♦Jx♣Qx and 2♠ will probably make eight tricks.

Cappelletti: “2♠—Vulnerable at IMPs I bid 3♥ or 3♠; but at matchpoints, I go plus and welcome bad splits.”

King: “2♠—My hand is too strong to pass 2♥, but I don't want to bid 2NT and risk a minus score. 2♠ gives partner a chance to bid again with extras and should help protect our plus score if partner has a weak third seat opener.”

Schwartz: “2♠—Underbidding by only a point and again will be well placed if partner takes another bid. Don't want to punish partner for opening light in third position.”

Two experts raise hearts. They violate the rule — Don't raise a second suit, when it could be a four-card suit, holding only three.

Adams: “3♥—2NT just looks wrong. 2♠ too weak. Nothing left. I owe a heart, but the eight points in majors should be most welcomed. This hand rates to be played better from partners side... around to his diamond guard if he has one. And if not, notrump is really bad.”

Woolsey: “3♥—I don't like raising partner's second suit with three, but it looks best

here. The hand is wrong for 2NT with three small diamonds. If partner is 6-4 he will remember to bid 3♠ over 3♥ and we will get to the right contract.”

Since partner knows you have four hearts when you raise, he might not make the safety bid of 3♠ with 6-4.

Three experts bid 2NT. Who needs a diamond stopper?

Humphreys: “2NT—2NT expresses the values here. 3♣ would show a much worse hand, 2♠ is a simple preference, 3♠ is silly, and 3♥ with a balanced hand and only three-card support seems uncalled for. If partner rebids 3♥ I will raise to 4♥.”

Hopkins: “2NT—After 2NT, I play three-of-either-major is non-forward-going and three-of-a-minor is a “pattern-out” bid showing extras and helping me choose our best spot. This should help us avoid an ignominious 3NT when partner has, say, a singleton diamond.”

Roman: “2NT—See answer to problem two.”

One expert shows a three-card limit raise in spades. One spade short but the strength is right. If opener has ♠AQJxx♥AJxx♦xx♣Qx, 4♠ makes unless suits split very badly.

Parker: “3♠—I wish I could bid 3 sparts. I have too good a hand to take a simple preference and hope that with a 5-5 partner will rebid 4♥ to give me a choice. Of course we may be too high by then but I do have great working cards.”

When you don't have an eight-card fit, stay low. Don't go out of your way to protect partner when he opens in third seat.

4) IMPs, None Vul

♠KJ10942♥AQ98♦10♣102

<u>SOUTH</u>	<u>WEST</u>	<u>NORTH</u>	<u>EAST</u>
—	Pass	1♦	Pass
1♠	Pass	3♣	Pass
????			
<i>Action</i>	<i>Score</i>	<i>Votes</i>	<i>Solvers</i>
3♠	100	5	66
3NT	90	3	57
3♥	70	2	111
4♠	20	0	7
3♦	20	0	2

Partner has shown strength and length in the minors and we have strength and length in the majors. That tells me that we have a likely misfit and should play this hand in notrump. The problem is that the only way to get to 3NT is to bid 3NT now. If we bid three-of-either-major, partner could continue on his path of showing minors. Two experts agree with me and make the practical bid. For the two out of ten times you find partner with spade support, there will be eight out of ten times when he doesn't. On those eight out ten hands, you want to avoid playing five-of-a-minor at all cost and the best way is to bid 3NT.

Cappelletti: “3NT—If partner persists with 4♣ or 4♦, then I bid 4♠.”

Woolsey: “3NT—This is our most likely game, and if I don't bid it now we may not get there. If partner has spade support, I can only hope that he will risk 4♠. This bid would be a lot more comfortable playing Cole, where partner can use the 2♣ rebid to show a good hand with spade support.”

Cole is a convention where you give up the natural 2♣ rebid in order to be able to show many different hand types including three-card spade raises of various strengths.

Five experts bid 3♠. If partner does not have anything in hearts, he will bid four-of-some-minor which bypasses 3NT, the most likely game. 3♠ almost guarantees having to rebid 4♠, playing opposite anything including a void.

Adams: “3♠—This suit plays opposite a stiff, or maybe a void. Hard to see 4♠ going set. 3NT could have trick problems, and does not really leave room for more descriptive bidding. 3♥ is wrong. It does not show hearts. I will have no idea what is going on when partner bids again.”

King: “3♠—I think I should rebid this suit as the most important feature of my hand.”

Hopkins: “3♠—I am looking towards slam or game in spades unless overruled by partner.”

Roman: “3♠—A breather after three very tough problems. Natural, forcing, and a hand too strong to merely bid 3NT.”

Schwartz: “3♠—Slam is in the ballpark

only if partner can raise. If partner rebids a minor, we should have enough stuff to make 4NT. 3♥ doesn't really show hearts so no point to it. On some hands would consider a preference in a stiff, but if partner is all minors, will work out badly here."

If partner rebids 4♣ over 3♠, do you really expect him to pass 4NT?

Two experts bid 3♥. 3♥ should show hearts because with a non-descriptive hand, one should bid 3♦ allowing opener to complete his description. At least partner can bid 3NT over 3♥ knowing that you have something in hearts.

Parker: "3♥—I am afraid if I bid 3NT, partner with three spades, will pass and we may miss a slam. I can bid 3♠ but partner will be hard pressed to bid 3NT if he has no heart stopper. Over 3♥ he can bid 3NT or show spade support. Give him ♠Axx♥x♦AKxxx♣AKxx and we should make 6♠. If he has long running minors then we will get to 3NT."

Humphreys: "3♥—We're in a forcing auction, so I'll show my second suit. Clearly my sequence shows at least five spades, so partner should take a preference to 3♠ with two-card support. That way, partner can bid 3NT with some 1354 or 0264 19 count. If partner bids 3NT I will pass, but if he bids 3♠ I want to try for slam. Unfortunately, there isn't a good way to do that and still stop in 4♠, so I guess I'll have to ask for key-cards. This is a tough hand."

Sometimes is right to make a practical bid. 3NT is a practical bid.

5) Matchpoints, None Vul

♠102♥109♦AQJ72♣QJ54

<u>SOUTH</u>	<u>WEST</u>	<u>NORTH</u>	<u>EAST</u>
Pass	1♠	2♥	Pass
????			
<i>Action</i>	<i>Score</i>	<i>Votes</i>	<i>Solvers</i>
3♥	100	5	27
2♠	90	1	23
3♦	70	3	92
Pass	50	1	94
4♥	30	0	1
3♣	20	0	2
2NT	20	0	1
3♠	20	0	1

Again partner has overcalled, but this time at the two-level, and you have to decide how to advance with no clear-cut bid. Passing is also an option. Since partner could have a very good hand, passing could cause you to miss a cold game. Partner's 2♥-overcall shows an opening bid and a good heart suit. Opposite a minimum overcall such as ♠xx♥AQJxxx♦x♣Kxxx, 4♥ has play and partner could have a 16-count. The two popular expert choices are raising hearts or bidding 3♦. Raising hearts has the advantage that if there is a game it figures to be in hearts. Bidding diamonds has the advantage that you will get a diamond lead if you become defenders.

Five experts agree with me and raise hearts. One of them even makes a limit raise. That 10-9 of hearts is very strong.

Cappelletti: "3♥—If I bid 2♠ partner might play me for a better hand."

King: "3♥—I have extra high card points, but I am short a heart, so I hope these cancel out and this bid works."

Roman: "3♥—Too much to pass, and with the expected spade lead, this hand could play very nicely for partner."

Schwartz: "3♥—2♠ is possible, but partner will expect another bid from me if he bids a minor. The 10-9 of hearts are big cards, particularly at matchpoints."

10-9 doubleton is a strong two-card holding.

One expert shows a limit raise. Light a heart but 10-9 is worth three.

Adams: "2♠—Shows a limit raise, but could be a doubleton. Perfect."

Three experts bid their five-card suit. Partner should expect some heart tolerance since you're a passed hand. If the opponents compete, you'll get partner off to the best lead. If I had two little hearts, I would bid 3♦ but the 10-9 doubleton looks so powerful. By bidding 3♦, you might endplay partner into bidding 3NT with only one spade stopper on a hand where 4♥ is where you belong. ♠Axx♥AQJxx♦xx♣Axx for instance.

Humphreys: "3♦—Can't pass, can't raise, can't bid notrump. 3♦ stands out. I think that since I'm a passed hand, partner

should work out that I have heart tolerance. What kind of hand would correct a 2♥ overcall to 3♦ but couldn't open in first seat non-vul? Impossible. So I think this sequence shows two hearts, a good diamond suit, a maximum hand, and no spade stopper. Partner will know what to do. He always does."

Woolsey: "3♦—This should probably be fit-showing by a passed hand, but whether it is or not the call looks about right."

Hopkins: "3♦—Bidding what I have? I

feel free to pass 3♥."

One expert passes. His partner must not have much when they overcall.

Parker: "Pass—Unlike problem two, we are getting too high if I bid diamonds and partner has no fit. I have enough good stuff to sit for a possible double and the opponents rate to bid 2♠. Over that I can bid 2NT or double depending on our agreements."

10-9 doubleton is worth more than three little.

SOLVERS' SCORES

John Adams	4♥	1NT	3♥	3♠	2♠	440
Mike Cappelletti	4♦	1♠	2♠	3NT	3♥	400
Fred King	4♥	1NT	2♠	3♠	3♥	480
Robbie Hopkins	4♦	1NT	2NT	3♠	3♦	410
Greg Humphreys	Dbl	1NT	2NT	3♥	3♦	380
Steve Parker	Dbl	2♣	3♠	3♥	Pass	280
Steve Robinson	4NT	1NT	2♠	3NT	3♥	490
Jeff Roman	3NT	1NT	2NT	3♠	3♥	460
Alan Schwartz	4♥	1NT	2♠	3♠	3♥	480
Kit Woolsey	Dbl	1NT	3♥	3NT	3♦	390

WBL SOLVERS' CLUB'S NEW PROBLEMS

January/February 2004

1) Matchpoints, You're Vulnerable

♠AQ9654♥A43♦A103♣K

<u>SOUTH</u>	<u>WEST</u>	<u>NORTH</u>	<u>EAST</u>
1♠	Pass	1NT	Pass
????			

2) Matchpoints, Both Vulnerable

♠AJ5♥AJ9♦AKJ1093♣10

<u>SOUTH</u>	<u>WEST</u>	<u>NORTH</u>	<u>EAST</u>
1♦	Pass	1♥	Pass
????			

3) IMPs, None Vulnerable

♠K107432♥K♦J84♣A62

<u>SOUTH</u>	<u>WEST</u>	<u>NORTH</u>	<u>EAST</u>
—	—	1♥	Pass
1♠	Pass	2♣	Pass
????			

4) Matchpoints, EW Vulnerable

♠KQT743♥J8♦A96/K2

<u>SOUTH</u>	<u>WEST</u>	<u>NORTH</u>	<u>EAST</u>
1♠	Pass	2♦	1♣
?????			Pass

5) IMPs, Both Vulnerable

♠10932♥AJ8♦Q10♣K765

<u>SOUTH</u>	<u>WEST</u>	<u>NORTH</u>	<u>EAST</u>
1♠	Pass	1♦	Pass
?????		4♣	Pass

Return answers by January 27 to:

Steve Robinson

2891 S. Abingdon St #A2,

Arlington VA, 22206

robinswr@erols.com

OUR PROFESSIONAL
TEAM OF
CERTIFIED PUBLIC
ACCOUNTANTS
IN ROCKVILLE
CAN ASSIST YOU
WITH A WIDE RANGE
OF ACCOUNTING
AND TAX SERVICES.



GENE FISHER



BARBARA AMES

FISHER BARKANIC & AMES L.L.C.

CERTIFIED PUBLIC ACCOUNTANTS

CPA

Dedicated to excellence in client service.

Tax & Business Services Available:

- *Income Tax Return Preparation*
- *Estate & Trust Administration*
- *Business Profitability Enhancement*
- *Estate Tax Return Preparation*
- *Planning for Retirement Plan Setup & Distributions*
- *Buying & Selling Business Consulting*
- *IRS Audits and Negotiations*
- *Divorce Tax Issues/Planning*
- *Nonprofit Organization Accounting & Income Taxes*
- *Quickbooks Setup & Consulting*

15825 Shady Grove Road, Suite 130

Rockville, MD 20850

301-330-6664 • 301-330-6860 Fax • www.fbacpa.com

2003 TROPHY RACE STANDINGS

www.WashingtonBridgeLeague.org

Updated by our Webmaster, Don Berman

The Lovenberg Race is open to all WBL members; the Izzy Cohen Race is open to all WBL members who started the calendar year with fewer than 1500 masterpoints; the Tubbs Race is open to all WBL members who started the calendar year as a Non-Life Master; the Woolridge Race is open to all WBL members who started the calendar year with fewer than 20 masterpoints; the Machlin Race includes only those points won in senior events at the five WBL Sectional Tournaments.

Winners in each category will receive four sessions of free plays. Second place gets two and third place gets one.

This list is up to date through December 7, 2003, including KOs and RR. All points are subject to audit by the WBL Director.

Lovenberg

- 1 230.27 Steve Robinson
- 2 223.57 Leo LaSota
- 3 177.62 Alfred Steinberg
- 4 147.63 Mark Shaw
- 5 133.81 Alan Kleist
- 6 127.06 John Adams
- 7 113.33 Fred King
- 8 112.15 John Lawrence
- 9 102.43 Charity Sack
- 10 101.08 Lloyd Rawley
- 11 97.34 Andrew Gofreed
- 12 94.59 Barbara Shaw
- 13 91.67 Eugene Kales
- 14 89.53 Richard Wegman
- 15 83.65 Warren Kaufman
- 16 82.60 Hailong Ao
- 17 81.62 Mita Banerjee
- 18 80.24 Ellen Klosson
- 19 79.92 David Ruderman
- 20 77.91 Ellen Cherniavsky
- 21 76.09 Richard Ferrin
- 22 74.97 Leon Letwin
- 23 71.89 Charleen Brand
- 24 70.96 Arnie Frankel
- 25 65.19 Yi Zhong

Izzy Cohen

- 1 112.15 John Lawrence
- 2 102.43 Charity Sack
- 3 101.08 Lloyd Rawley
- 4 82.60 Hailong Ao
- 5 81.62 Mita Banerjee
- 6 76.09 Richard Ferrin
- 7 62.26 James Geist
- 8 61.75 William Hacker
- 9 51.97 Kevin Barnes
- 10 51.94 Joel Miller
- 11 51.78 Andrew Kaufman
- 12 51.72 John Lowe III
- 13 51.70 Charles Young Jr
- 14 50.21 Kitty Gottfried
- 15 48.89 Alice Wegman

Tubbs

- 1 51.97 Kevin Barnes
- 2 51.72 John Lowe III
- 3 42.20 Steven Sacks
- 4 41.01 Mark Rosen
- 5 39.62 Ellen Rosenthal
- 6 37.72 Neal Rosenthal
- 7 33.09 William Gill
- 8 32.51 Suzanne Abrams
- 9 32.02 Martin Reed
- 10 31.44 Howard Tash

Woolridge

- 1 37.72 Neal Rosenthal
- 2 13.61 Rachele Sladoff
- 3 12.78 Cielle Block
- 4 11.17 James Andre
- 5 11.16 Jean Agenbroad
- 6 10.74 William Kingery Jr
- 7 8.88 Lily Andre
- 8 8.00 Ron Starr
- 9 7.70 David Mead
- 10 7.70 Kathleen O'Toole

Machlin

- 1 6.84 Audrey Marbach
- 2 5.26 Alice Miller
- 3 4.30 Eugene Davidson
- 4 4.09 Mary O'Neil
- 5 4.09 Jim O'Neil
- 6 3.92 David Wakefield
- 7 3.88 Juline Glaz
- 8 3.88 Daniel Shankle Jr

**0-20
LESSON
& GAME**

**GUARANTEED
PARTNERS!**

**7:30PM -
10:30PM**

JOIN ANYTIME

The cost is \$5. This includes a 30 minute lesson by Dr. Steven Forsythe followed by fun, enjoyable bridge for players with 0-20 masterpoints.

Lessons will cover slam bidding, weak twos, 3 level+ pre-empts, overcalls, takeout doubles, negative doubles, opening leads, and signaling. Each lesson will be tailored to the needs and interests of the players.

This is a great program for beginners as well as experienced social bridge players! Partners will be provided if needed. For more information call or email Steve or Sandy Forsythe at (301) 592-9177 (email: majslf@aol.com)

SCHEDULE

All Games held at Christ the King Church

- January 1●●●**CLOSED for New Year's Day**●●●
- January 8.....WBL Sectional
- January 15.....Stratified Unit Championship
- January 22.....StrataFlighted Unit Championship
- January 29.....StrataFlighted GNTeams Qualifying
- February 5.....Strataflighted ACBL Charity Game
- February 12Strataflighted Upgraded Club Championship
- February 19.....NVBA Sectional
- February 26.....Stratified District 6/Club STaC
- March 4.....WBL Sectional
- March 11.....Strataflighted District 6 Charity Game
- March 18.....Strataflighted Unit Championship
- March 25.....Strataflighted Club Championship
- April 1.....Strataflighted Board-A-Match Teams
- ***April 7.....Strataflighted Unit Championship at WBC

~ ♣♦♥♠ ~

Newcomer, Novice, and Intermediate

- 7:15pm.....Free Duplicate Mini-Lesson
- 7:30pm.....Bridge

Call Frances Burke at 301-384-6103 for info on Newcomer Classes and Games

UNIT GAME PARTNERS GUARANTEED

To find a partner before the game, contact Barbara Shaw: barshaw@comcast.net, 301-598-3339, or Charity Sack: charity@charitysack.com, 703-963-7027. Please call at least 2 days before game time.Or log on to the WBL's new **Partnership Desk Online** at: www.WashingtonBridgeLeague.org.

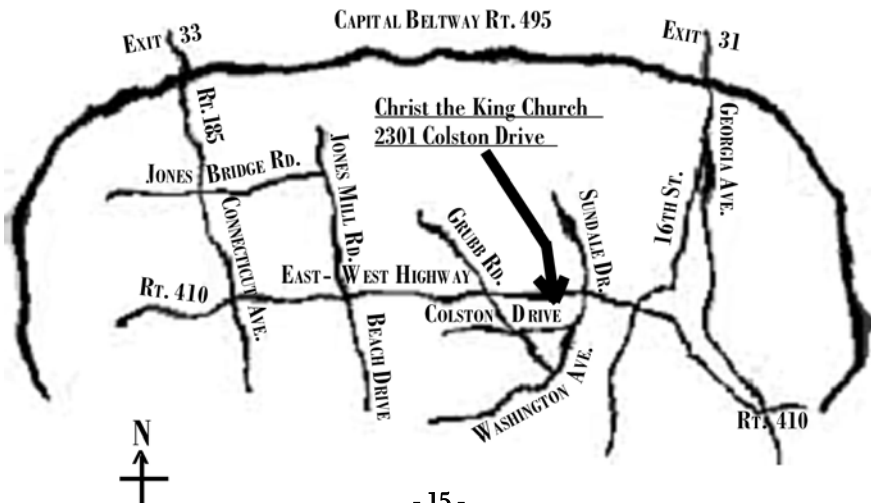
UNIT GAME CARPOOL AVAILABLE

To arrange a carpool, contact Don Berman, Carpool Coordinator, at 301-776-3581 or don.berman@verizon.net.Or log on to the WBL's new **Online Carpool Notices** at: www.WashingtonBridgeLeague.org.

GAME IS TO START PROMPTLY AT 7:30PM

FOR MORE INFORMATION CALL 301-649-1812

MAP TO CHRIST THE KING CHURCH





REALTYTOWEB.COM



**Eva Klivington – Owner,
Principal Broker, VA, MD, DC
&**



Margit Klivington – Realtor

“SPECIAL BRIDGE PLAYER” DEAL

How fast can we sell your house? Start Packing!

LIST, BUY or RENT with your bridge player friend.
We have 20 years real estate expertise and our successful track record selling \$20 million per year, speaks for itself.

Did you know that only 7% of the people in the real estate business sell 80% of all properties? We are in the top 1% of that elite group. We will sell your home with full service at discounted commission.

Unbeatable commission means that we will credit you 1% of the sales price of your home at settlement. We have built our success through our clients. You deserve the best!

Visit our website for the entire MLS listings (700,000+) throughout Northern Virginia: RealtyToWeb.com

1/3 OFF
Your Commission

Guaranteed to beat any commission by \$50



**Call for a free, no obligation market analysis!
703-391-7450**

Coming soon!

\$24 million dollars worth of government foreclosures. (People who did not pay their taxes).

We are official HUD representatives for the government.



RealtyToWeb.com
Fox Mill Shopping Center,
2557 John Milton Drive, Herndon, VA 20171
703-391-7450 (Office) 703-391-7455 (Fax)

Email: Broker@RealtyToWeb.com
Independently owned and operated!



COMITTEE ACTION XLIV

Part I

by Rich Colker, rcolker@worldnet.att.nat

The principality of Monaco is as close to the perfect place to hold a World Bridge Championship as you're likely to find, what with its rugged, spectacular scenic beauty (it lies on a stretch of the Mediterranean coast called the Côte d'Azur, sheltered to the North by the French Alps, situated between Nice and Menton, just a stone's throw from the Italian border), great restaurants and quaint old-world charm. And of course the casino at Monte Carlo, located just across the street from the playing site, didn't hurt any judging from the reactions of many of the players.

The tournament went smoothly with only eight appeals heard up until the final day of the tournament. Then all hell broke loose. On the final deal of the final segment of the Bermuda Bowl final between USA 1 and Italy, this case arose.

Bd: 128
Dlr: West
Vul: E/W

Lorenzo Lauria
♠ 2
♥ AJ93
♦ KQ109865
♣ 5

Bob Hamman	Paul Soloway
♠ J10	♠ A6543
♥ 542	♥ KQ1086
♦ A7	♦ 42
♣ K107642	♣ A

Alfredo Versace
♠ KQ987
♥ 7
♦ J3
♣ QJ983

West	North	East	South
Pass	1♦	2♦	Dbl
2♥	3♦	Pass	Pass
3♥	5♦	Dbl	All Pass

This being the final board, as soon as the opening lead was made South, Alfredo Versace, bounded out of the room to join his

teammates in the Vugraph theater, leaving his partner, Lorenzo Lauria, to pull his cards from dummy himself. (The significance of this will soon become apparent.) East led the ♣A and shifted to the ♥K to declarer's ace. Declarer played the ♥J (hoping to pin the ten), covered by the queen and ruffed, ruffed a club to hand with the ♦8 and then ruffed his small heart looking for the ten to fall. No such luck. Declarer then resignedly passed the ♠K (J, 2) to East's ace in the following position:

♠ —	
♥ 9	
♦ KQ10965	
♣ —	
♠ 10	♠ 654
♥ —	♥ 108
♦ A6	♦ 42
♣ K1076	♣ —
♠ Q987	
♥ —	
♦ —	
♣ QJ9	

At this point North knew he would be two down as soon as East cashed his ♥10. Seemingly in anticipation of this he reached across the table and pulled the ♠7, presumably to pitch on the heart. But Soloway, who had been given the wrong count in the heart suit by Hamman, "knew" that his ♥10 was not cashing so he led a low spade hoping to give Hamman a spade ruff. Declarer then tried to change his play from dummy to the ♠Q and pandemonium broke loose—not just at the table but in the Vugraph theater as well. The Director was called and North told him that he was "covering up" the ♠K with the seven. (The ♠K had been played to the previous trick and, because dummy was absent, was still face-up on the table.) The Director ruled that the ♠7 was a played card and assigned the score for 5♦ doubled down two, -300 for N/S.

This one trick difference in the result on

this board could hardly have had a more profound effect on the match. If the Americans scored +300 they would win the match, and the 2003 Bermuda Bowl, outright—by 1 imp—while if they scored +100, after 128 boards of play, the match would be a dead tie and an eight-board playoff would be required to determine the World Champions.

Amid great tumult the Italians appealed the Director's ruling. North told the Committee that he had picked up the small spade to "cover the king," and demonstrated his meaning, but he insisted that his intention was to play the queen. East said he had heard the seven named and both East and West had seen declarer touch the ♠7, West following with the ten. North protested that he had not named the card he was playing and that his intent was to play the queen. (The Committee resolved this matter by deciding it was unlikely that declarer would have called a card for a dummy who was not at the table. It was their opinion that the naming of the card was by the Vugraph caller.)

The Committee asked the Chief Director to explain the applicable law to them,

which is:

Law 45C3: *A card in the dummy must be played if it has been deliberately touched by declarer except for the purpose of arranging dummy's cards, or of reaching a card above or below the card or cards touched.*

The Committee decided (appropriately) that declarer had touched the ♠7 and had not provided any compelling evidence that he had done so for the purpose either of adjusting dummy's cards or of reaching for the queen. (By the above law, picking up the card in order to place it on top of a played card commits declarer to playing the card.) Having not heard anything in the evidence that persuaded them that the Director's ruling was incorrect, the Committee upheld the Director's ruling.

In what many bridge journalists now consider the most exciting finish in Bermuda Bowl history, USA 1 (Nick Nickell, Dick Freeman, Bob Hamman, Paul Soloway, Eric Rodwell, Jeff Meckstroth) had gone from 28 imps up at the start of the final 16-board segment to down 11 imps with only one deal left to play, and had emerged the victors by a single imp. Who says 1 imp can't matter?

Long Term Care Insurance

The average nursing home cost in the Washington, D.C. area is \$50,000 - \$60,000 annually.

Do not deplete your life savings for long term care costs.

Call for Quote:

(301) 299-2235

ROY BECKER INSURANCE AGENCY

11711 Greenlane Dr., Potomac, MD 20854

♣ ♦ ♠ ♥

“THE SURVEY SAYS...”

♥ ♠ ♦ ♣

The survey results that began in the last issue continue here with results from questions 6, 7, and 8. Again, there were 106 total respondents (A/X: 49, B/C: 48, D/N: 9). The tabulation continues here as described in our last issue, with the addition of giving both a weighted and unweighted average result where relevant. The next issue will continue publishing the results.

6. Membership Motions

a. Should we continue to allow motions to be brought at membership meetings?

72.6% of all respondents answered.

	<u>EACH VOTE EQUAL</u>	<u>WEIGHTED</u>
Yes:	92.2%	91.6%
No:	7.8%	8.4%
No Response:	27.4%	27.4%

b. What should the requirements (if any) be for advance notice of each type of motion brought? (The policies have recently been amended to read that all motions to be brought before the WBL membership must be published in the WBL Bulletin in advance of a duly convened meeting of the membership. This requirement used to just apply to motions that would change the Constitution.)

A. I agree with the Board that advance notice in the WBL Bulletin for all types of motions is necessary.

B. Advance notice in the WBL Bulletin is only necessary for motions that would change the Constitution.

C. No advance notice should be required for any motion.

D. Other

71.7% of all respondents answered

	<u>EACH VOTE EQUAL</u>	<u>WEIGHTED</u>
A:	47.4%	49.2%
B:	40.8%	40.3%
C:	11.8%	10.5%
D:	0.0%	0.0%
No Response:	28.3%	28.3%

7. Sectional Start Times

a. What time would you like to see each of the following sectional events begin? (Please put your importance rating next to your first choice only.)

A. Thursday, 1st session:

62.3% of all respondents answered

	<u>EACH VOTE EQUAL</u>	<u>WEIGHTED</u>
9:00 am:	6.1%	5.0%
9:30 am:	4.5%	4.0%
10:00 am:	27.3%	29.0%
10:30 am:	22.7%	26.0%
11:00 am:	6.1%	7.0%
11:30 am:	6.1%	4.0%
12:00 pm:	1.5%	1.0%
1:00 pm:	13.6%	10.0%
1:30 pm:	4.5%	3.0%
2:00 pm:	7.6%	11.0%
No Response:	37.7%	37.7%
AVERAGE:	11:05 am	11:03 am

B. Thursday, 2nd session:

80.2% of all respondents answered

	<u>EACH VOTE EQUAL</u>	<u>WEIGHTED</u>
5:00 pm:	2.4%	2.9%
6:00 pm:	2.4%	2.2%
6:30 pm:	2.4%	2.9%
7:00 pm:	22.4%	27.0%
7:30 pm:	67.1%	62.0%
8:00 pm:	3.6%	2.9%
No Response:	19.8%	19.8%
AVERAGE:	7:19 pm	7:14 pm

C. Friday, 1st session:

61.3% of all respondents answered

	<u>EACH VOTE EQUAL</u>	<u>WEIGHTED</u>
9:00 am:	15.4%	11.2%
9:30 am:	15.4%	12.2%
10:00 am:	35.4%	38.8%
10:30 am:	21.5%	26.5%
11:00 am:	9.2%	8.2%
11:30 am:	3.1%	3.1%
No Response:	38.7%	38.7%
AVERAGE:	10:01 am	10:05 am

D. Friday, 2nd session:

63.2% of all respondents answered

	<u>EACH VOTE EQUAL</u>	<u>WEIGHTED</u>
12:30 pm:	1.5%	.9%
1:00 pm:	17.9%	15.2%
1:30 pm:	28.4%	25.9%
2:00 pm:	35.8%	39.3%
2:30 pm:	7.7%	7.1%
3:00 pm:	9.0%	11.6%
No Response:	36.8%	36.8%
AVERAGE:	1:48 pm	1:51 pm

E. Friday, 3rd session:

78.3% of all respondents answered

	<u>EACH VOTE EQUAL</u>	<u>WEIGHTED</u>
3:30 pm:	2.4%	3.4%
4:30 pm:	1.2%	1.7%
6:00 pm:	1.2%	1.7%
6:30 pm:	6.0%	6.8%
7:00 pm:	20.5%	23.9%
7:30 pm:	51.8%	43.1%
8:00 pm:	6.9%	18.8%
No Response:	21.7%	21.7%
AVERAGE:	7:16 pm	7:11 pm

F. Saturday, 1st session:

61.3% of all respondents answered

	<u>EACH VOTE EQUAL</u>	<u>WEIGHTED</u>
9:00 am:	16.9%	14.8%
9:30 am:	18.5%	16.7%
10:00 am:	29.2%	27.8%
10:30 am:	24.6%	27.8%
11:00 am:	6.2%	8.3%
11:30 am:	4.6%	3.7%
No Response:	38.7%	38.7%
AVERAGE:	10:00 am	9:57 am

G. Saturday, 2nd session:

82.1% of all respondents answered

	<u>EACH VOTE EQUAL</u>	<u>WEIGHTED</u>
12:30 pm:	1.1%	.7%
1:00 pm:	24.1%	22.7%
1:30 pm:	35.6%	34.0%
2:00 pm:	26.4%	28.0%
2:30 pm:	6.9%	8.0%
3:00 pm:	5.7%	6.7%
No Response:	17.9%	17.9%
AVERAGE:	1:39 pm	1:42 pm

H. Saturday, 3rd session:

79.2% of all respondents answered

	<u>EACH VOTE EQUAL</u>	<u>WEIGHTED</u>
5:30 pm:	1.2%	.7%
6:00 pm:	3.6%	2.1%
6:30 pm:	7.2%	6.3%
7:00 pm:	39.3%	44.4%
7:30 pm:	42.9%	40.3%
8:00 pm:	6.0%	6.3%
No Response:	20.8%	20.8%
AVERAGE:	7:12 pm	7:13 pm

I. Sunday, 1st session:

75.5% of all respondents answered

	<u>EACH VOTE EQUAL</u>	<u>WEIGHTED</u>
9:00 am:	5.0%	6.3%
9:30 am:	2.5%	2.1%
10:00 am:	30.0%	28.2%
10:30 am:	16.3%	16.2%
11:00 am:	21.3%	23.2%
11:30 am:	6.3%	5.6%
12:00 pm:	12.5%	12.7%
1:00 pm:	2.5%	2.8%
1:30 pm:	1.3%	.7%
2:30 pm:	2.5%	2.1%
No Response:	24.5%	24.5%
AVERAGE:	10:50 am	10:46 am

J. Sunday, 2nd session:

68.9% of all respondents answered

	<u>EACH VOTE EQUAL</u>	<u>WEIGHTED</u>
1:00 pm:	5.5%	5.6%
1:30 pm:	5.5%	3.2%
2:00 pm:	11.0%	11.9%
2:30 pm:	15.1%	17.5%
3:00 pm:	15.1%	14.3%
3:30 pm:	16.4%	18.3%
4:00 pm:	6.9%	7.9%
4:30 pm:	4.1%	4.0%
5:00 pm:	8.2%	6.4%
5:30 pm:	1.4%	.8%
6:00 pm:	5.5%	4.0%
7:00 pm:	5.5%	6.4%
No Response:	31.1%	31.1%
AVERAGE:	2:51 pm	3:10 pm

b. If it turns out that 2 different particular start times for a particular session turn out to get the bulk of all the votes fairly evenly, what do you think of the idea of running half of our tournaments with one start time and the other half with the other start time for that session?

79.2% of all respondents answered.

	<u>EACH VOTE EQUAL</u>	<u>WEIGHTED</u>
Yes, do it:	40.5%	33.8%
No, don't do it:	59.5%	66.2%
No Response:	20.8%	20.8%

8. Breaks/Food during Sectionals

a. How long of a dinner break should there be on each day?

A. Thursday:

57.5% of all respondents answered

	<u>EACH VOTE EQUAL</u>	<u>WEIGHTED</u>
None:	3.3%	4.9%
15 min.:	0.0%	0.0%
30 min.:	9.8%	11.8%
45 min.:	8.2%	8.8%
1 hr.:	19.7%	18.6%
1 hr. 15 min.:	8.2%	6.9%
1 hr. 30 min.:	24.6%	22.5%
1 hr. 45 min.:	1.6%	1.0%
2 hr.:	9.8%	10.8%
2 hr. 15 min.:	1.6%	1.0%
2 hr. 30 min.:	8.2%	6.9%
2 hr. 45 min.:	1.6%	1.0%
3 hr.:	3.3%	5.9%
No Response:	42.5%	42.5%
AVERAGE:	<i>1hr. 23min.</i>	<i>1hr. 22min.</i>

B. Friday:

65.1% of all respondents answered

	<u>EACH VOTE EQUAL</u>	<u>WEIGHTED</u>
None:	1.4%	1.7%
15 min.:	0.0%	0.0%
30 min.:	8.7%	10.3%
45 min.:	5.8%	6.8%
1 hr.:	20.3%	21.4%
1 hr. 15 min.:	7.2%	6.0%
1 hr. 30 min.:	24.6%	23.1%
1 hr. 45 min.:	2.9%	4.3%
2 hr.:	15.9%	13.7%
2 hr. 15 min.:	1.4%	.9%
2 hr. 30 min.:	8.7%	8.5%
2 hr. 45 min.:	1.4%	.9%
3 hr.:	1.4%	2.7%
No Response:	34.9%	34.9%
AVERAGE:	<i>1hr. 27min.</i>	<i>1hr. 26min.</i>

C. Saturday:

76.4% of all respondents answered

	<u>EACH VOTE EQUAL</u>	<u>WEIGHTED</u>
None:	0.0%	0.0%
15 min.:	0.0%	0.0%
30 min.:	6.2%	7.5%
45 min.:	4.9%	4.1%
1 hr.:	16.0%	15.8%
1 hr. 15 min.:	3.7%	4.8%
1 hr. 30 min.:	27.2%	28.1%
1 hr. 45 min.:	3.7%	4.1%
2 hr.:	21.0%	18.5%
2 hr. 15 min.:	6.2%	6.2%
2 hr. 30 min.:	7.4%	6.8%
2 hr. 45 min.:	2.5%	2.1%
3 hr.:	1.2%	2.1%
No Response:	33.6%	33.6%
AVERAGE:	<i>1hr. 36min.</i>	<i>1hr. 35min.</i>

D. Sunday:

71.7% of all respondents answered

	<u>EACH VOTE EQUAL</u>	<u>WEIGHTED</u>
None:	5.3%	3.6%
15 min.:	6.6%	10.0%
30 min.:	30.3%	33.6%
45 min.:	7.9%	6.4%
1 hr.:	23.7%	18.6%
1 hr. 15 min.:	5.3%	5.7%
1 hr. 30 min.:	10.5%	12.9%
1 hr. 45 min.:	0.0%	0.0%
2 hr.:	7.9%	5.0%
2 hr. 15 min.:	1.3%	2.1%
2 hr. 30 min.:	0.0%	0.0%
2 hr. 45 min.:	0.0%	0.0%
3 hr.:	1.3%	2.1%
No Response:	28.3%	28.3%
AVERAGE:	<i>55 min.</i>	<i>54 min.</i>

b. Would you like a playthrough on Sundays of the sectionals (with food available)?
(This question was redundant with question 8a. D. Sunday above.)

c. What food do you like to see offered?

79.2% of all respondents answered

RANKED BY VOTE TOTAL, (EACH VOTE EQUAL)

Sandwiches	40
The current selection is good	34
Soda	25
Subs, Juice	each 20
Salads, Veggies	each 19
Pizza	18
Fruit	16
Chips	12
Trail mix	7
Wine/beer	5
Just drinks are necessary	4
Candy, danish	each 3
No food or drink is necessary	3

RANKED BY WEIGHTED VOTE TOTAL

Sandwiches	78
The current selection is good	55
Soda	48
Subs, Salads, Veggies	each 35
Juice	32
Fruit, Pizza	each 27
Fruit	16
Trail mix	13
Wine/beer	10
Just drinks	6
Danish	5
No food or drink is necessary	5
Candy	4

NEW ORLEANS FALL 2003 NABC

November 20-30, 2003

Local Winners' Results

TOP TEN CUMULATIVE POINT WINNERS

WBL Members

1	98.68	Nadine Wood
2	81.43	Peggy Allen
3	72.45	Mike Cappelletti Sr
4	66.74	Steve Robinson
5	65.72	Peter Boyd
6	61.76	Dick Bruno
7	58.76	Rae Dethlefsen
8	58.68	Tim Crank
9	57.36	Diane Walker
10	55.12	Beth Palmer

WBL Members under 2000 masterpoints

1	58.68	Tim Crank
2	57.36	Diane Walker
3	53.31	Richard Ferrin
4	50.37	Alice Wegman
5	48.63	Ellen Cherniavsky
6	30.37	Barbara Ames
7	28.52	Erez Hendelman
8	25.65	Roy Tibery
9	15.10	Jane Thurman
10	11.57	Charity Sack

WBL Members under 750 masterpoints

1	53.31	Richard Ferrin
2	28.52	Erez Hendelman
3	10.34	Ted Guthrie
4	9.02	Reese House
5	8.52	Emerita Hayward
6	7.18	J J Armour
7	6.76	Michael Goldman
8	5.14	Robert Levey
	5.14	Jimmy Ritzenberg
10	3.84	Gail Morgenweck
	3.84	Joan Fitzpatrick

AREA OVERALL FINISHERS FROM NATIONAL EVENTS

LIFE MASTER PAIRS

5	Mark Dahl, Richmond VA; David Butler, Keswick VA
43	David Chechelashvili, Arlington VA; Alan Kleist, Cheverly MD

LIFE MASTER WOMEN'S PAIRS

9	Nadine Wood, Silver Spring MD
24	Cecily Kohler, Washington DC
43	Lee De Simone, Alexandria VA

NON-LIFE-MASTER PAIRS

4	Livingston Johnson, Fairfax VA
---	--------------------------------

OPEN BOARD-A-MATCH TEAMS

6	Alan Sontag, Gaithersburg MD
25	Mark Dahl, Richmond VA; David Butler, Keswick VA
34	William Pettis, Silver Spring MD Frederick Allenspach, Potomac MD

WOMEN'S BOARD-A-MATCH TEAMS

3	Nadine Wood, Silver Spring MD
5	Beth Palmer, Silver Spring MD
7	Cecily Kohler, Washington DC
14	Barbara Ames - Diane Walker, Gaithersburg MD; Ellen Cherniavsky, Silver Spring MD; Rae Dethlefsen, Reston VA
15	Lee De Simone, Alexandria VA

BLUE RIBBON PAIRS

10	Peter Boyd, Silver Spring MD; Steve Robinson, Arlington VA
22	Ai-Tai Lo, Reston VA; Alan Schwartz, Fairfax VA
41	Robert Gookin, Falls Church VA; Jeff Roman, Alexandria VA
42	Alan Sontag, Gaithersburg MD
57	Frederick Allenspach, Potomac MD

SENIOR KNOCKOUT TEAMS

5/8	Sue Sachs - David Sachs, Owings Mills MD
-----	--

REISINGER BOARD-A-MATCH TEAMS

6	Alan Sontag, Gaithersburg MD
8	Jeff Roman, Alexandria VA

NORTH AMERICAN SWISS TEAMS

6	Mike Cappelletti Sr, Alexandria VA
8	Dick Bruno, Dulles VA
11	Richard Ferrin, Washington DC; Eugene Kales, Arlington VA; Alan Schwartz, Fairfax VA; Ai-Tai Lo, Reston VA
13	James Murphy, Chesapeake VA
20	Cecily Kohler, Washington DC
22	Rae Dethlefsen, Reston VA; Diane Walker, Gaithersburg MD

WASHINGTON BRIDGE LEAGUE'S NATIONAL CAPITAL TOURNAMENT

October 16-19, 2003

Results

TOP TEN CUMULATIVE POINT WINNERS

All Players

1	27.02Leo LaSota
2	25.92Steve Robinson
3	22.00Mark Shaw
4	19.65John Lawrence
5	18.32William Cole
6	18.05Mita Banerjee
7	14.64Donna Rogall
8	14.35Eugene Kales
9	14.35Richard Ferrin
10	14.00Alfred Steinberg

Players with fewer than 1500 masterpoints

1	19.65John Lawrence
2	14.35Richard Ferrin
3	12.80Lloyd Rawley
4	10.55Benjamin Stauss
5	7.95Charity Sack
6	7.94Christon Johnson
	7.94Robert Boorman
8	7.65John Lowe III
9	6.75Dan Kasture
10	6.63Hailong Ao

Players with fewer than 500 masterpoints

1	7.94Robert Boorman
	7.94Christon Johnson
3	5.69William Mendez Jr
	5.69Michael Goldman
5	5.17Paul Krueger
6	4.60Steven Forsythe
7	4.00Franz Delahan
	4.00Madeline Delahan
9	3.98Margaret Buda
10	3.83Paul Black

Intermediate/Novice Game Point Leaders

1	2.62Wanda Avila
	2.62Donor Lion
3	2.47Yasmina Patel
	2.47Roma Chandra
5	2.32Marie Siefring
6	2.21Gloria Halstead
7	1.66Juan Pardo
8	1.65Kim Ashenden
	1.65Neal McKinney
10	1.62Edward Molnar
	1.62Kathrine Loh

THURSDAY MORNING OPEN PAIRS



Stratum A

21 Pairs

1	Warren Kaufman - Leo Lasota69.02
2	C Ranganathan - V. S. Sharma61.71
3	Jack De Vivo - Martha Chen58.41
4	Adele Waggaman - Joseph Carlomagno57.48
5	James McGann - Barbara Vinson56.53
6	Charles Stenger - Robert Cohen56.50

Stratum B

13 Pairs

1	C Ranganathan - V. S. Sharma61.71
2	Jack De Vivo - Martha Chen58.41
3	Adele Waggaman - Joseph Carlomagno57.48
4	Morris Tepper - Wallace Oliver55.70
5	Margaret Buda - Nancy Weil50.69

Stratum C

7 Pairs

1	C Ranganathan - V. S. Sharma61.71
2	Margaret Buda - Nancy Weil50.69
3	John Laurim - Mary Ellen Lyon49.26

THURSDAY EVENING A/X PAIRS



Stratum A

70 Pairs

1	Lynn Jones - Joseph Trapani62.66
2	Richard Ferrin - Eugene Kales60.78
3	William Cole - Donna Rogall60.42
4	William Brown - James Gumbert60.18
5	Joel Miller - Leon Letwin59.94
6	Fred King - Richard Wegman59.66
7	Earl Glickstein - Robert Bell59.45

Stratum X

48 Pairs

- 1 Lynn Jones - Joseph Trapani62.66
- 2 Joel Miller - Leon Letwin59.94
- 3 Thomas Musso - Melissa Gumbert . . .56.94
- 4 Hailong Ao - Weizhong Bao56.71
- 5 William Gill - Michael Gill56.17
- 6 Robert Stearns - Charles Young Jr . .55.96

B/C PAIRS



Stratum B

45 Pairs

- 1 Karen Chagalis - Nancy Kramer68.06
- 2 James Adams - Hadi Abushakra62.43
- 3 Doris Konecke - Martha Chen62.06
- 4 Walter Smith Jr - Evan Allen62.00
- 5 Margie Coccodrilli - Edwin Fuller Jr .59.71
- 6 Marty Zupan - David Jackson59.50

Stratum C

24 Pairs

- 1 Walter Smith Jr - Evan Allen62.00
- 2 Samuel Bowlin - John Mason Jr58.00
- 3 Leo Cardillo - Frank Cardillo56.50
- 4 Prem Garg - Shyam Giridharadas . .53.61
- 5 Elizabeth Williamson - Roger Williamson 52.72
- 6 Patrice Gordon - Ruth Schrider52.18

1999 PAIRS



Stratum A

8 Pairs

- 1 Rena Brewrink - Billie Ahrens59.03
- 2 Jon Ranhand - Donald Goldman . . .56.94
- 3 Roma Chandra - Yasmina Patel55.56

FRIDAY MORNING

A/X PAIRS



Stratum A

10 Pairs

- 1/2 Barbara Shaw - Charleen Brand . . .56.77



- 1/2 Paul Krueger - James Stormes56.77
- 3 Benjamin Stauss - Hy Chansky56.25
- 4 Robert Cohen - Charles Stenger . . .53.65

Stratum X

5 Pairs

- 1 Paul Krueger - James Stormes56.77
- 2 Benjamin Stauss - Hy Chansky56.25

B/C/D PAIRS

Stratum B

11 Pairs

- 1 Jean Morgan - John Laurim62.50
- 2 John Terauds - Edwin Tums59.90
- 3 Robert Henry - John Kelly57.29
- 4 John Lowe III - Herbert Behre III . .56.25

Stratum C

7 Pairs

- 1 John Terauds - Edwin Tums59.90
- 2 Walter Lafferty - Mary Lafferty . . .55.21
- 3 Thomas Comstock - Bob Grudberg . .45.00

FRIDAY AFTERNOON

A/X Pairs



Stratum A

18 Pairs

- 1 Warren Kaufman - Shou-Ling Wang .61.81
- 2 Alfred Steinberg - Steve Robinson . .57.18
- 3/4 Leo LaSota - William Cole56.48
- 3/4 Donna Rogall - Charity Sack56.48
- 5 Jim Allen Jr - Glenn Lublin53.47

Stratum X

9 Pairs

- 1 Donna Rogall - Charity Sack56.48
- 2 Terry Feetham - Leon Letwin50.93
- 3 Louis Stuckey - Joseph Trapani . . .50.46
- 4 Weizhong Bao - Kefu Xu49.77

B/C PAIRS



Stratum B

12 Pairs

- 1 Christon Johnson - Robert Boorman .61.25
- 2/3 Deitrich Ford - Jackie Thompson .58.33
- 2/3 Sandra Forsythe - Steven Forsythe .58.33
- 4 William Pepelko - Barbara Pepelko .55.83

Stratum C

7 Pairs

- 1 Christon Johnson - Robert Boorman .61.25
- 2 Sandra Forsythe - Steven Forsythe .58.33
- 3 William Pepelko - Barbara Pepelko .55.83

299ER PAIRS



Stratum A

13 Pairs

- 1 Roma Chandra - Yasmina Patel .69.00
- 2 Craig Caplan - Teresa Caplan .62.00
- 3 Donor Lion - Wanda Avila .59.42
- 4 Craig Perry - Reggie Beard .58.08
- 5 Walter Lafferty - Mary Lafferty .56.20

Stratum B

9 Pairs

- 1 Roma Chandra - Yasmina Patel .69.00
- 2 Craig Caplan - Teresa Caplan .62.00
- 3 Craig Perry - Reggie Beard .58.08
- 4 Dale Collinson - Susan Collinson .51.81

Stratum C

7 Pairs

- 1 Roma Chandra - Yasmina Patel .69.00
- 2 Craig Caplan - Teresa Caplan .62.00
- 3 Craig Perry - Reggie Beard .58.08

FRIDAY EVENING

OPEN PAIRS



Stratum A

31 Pairs

- 1 Mark Shaw - Martin Graf .66.35

- 2 Alfred Steinberg - Leo LaSota .64.77
- 3 Benjamin Brill - Glenn Lublin .61.89
- 4 Anne Derbes - Robert Schwab .60.50
- 5 Jeff Roman - Steve Robinson .59.12
- 6 Warren Roberts III - Stephen Swearingen .57.34

Stratum B

18 Pairs

- 1 Anne Derbes - Robert Schwab .60.50
- 2 Lee Jensen - Monique Smith .54.66
- 3 John Lawrence - Tim Crank .52.98
- 4 John Lowe III - Merril Hirsh .52.15
- 5 Kitty Gottfried - Hy Chansky .51.36

Stratum C

9 Pairs

- 1 Anne Derbes - Robert Schwab .60.50
- 2 John Lowe III - Merril Hirsh .52.15
- 3 Robert Henry - Kevin Barnes .50.52
- 4 Mary Rogers - Nancy Jose .44.21

SATURDAY MORNING

OPEN PAIRS



Stratum A

14 Pairs

- 1 Glenn Lublin - Leo Lasota .63.39
- 2 Mark Rosen - Steven Forsythe .59.63
- 3 John Lowe III - Juanita Fernandez .59.31
- 4 Susan Collinson - Dale Collinson .53.97
- 5 James Andre - Lily Andre .52.48

Stratum B

10 Pairs

- 1 Mark Rosen - Steven Forsythe .59.63
- 2 John Lowe III - Juanita Fernandez .59.31
- 3 Susan Collinson - Dale Collinson .53.97
- 4 James Andre - Lily Andre .52.48

Stratum C

6 Pairs

- 1 Susan Collinson - Dale Collinson .53.97
- 2 James Andre - Lily Andre .52.48

SATURDAY AFTERNOON

B/C/D PAIRS



Stratum B

25 Pairs

- 1 Franz Delahan - Madeline Delahan .66.73

- 2 Jeffrey Kosnett - John Glynn61.42
- 3 Edward Rodrigues - Marilyn Thomas 61.00
- 4 Satinder Gupta - Janet Coffin57.33
- 5 Leslie Shafer - Ralph Williams Jr . . .57.28
- 6 Patrice Gordon - Ruth Schrider54.94

Stratum C

22 Pairs

- 1 Franz Delahan - Madeline Delahan . .66.73
- 2 Jeffrey Kosnett - John Glynn61.42
- 3 Edward Rodrigues - Marilyn Thomas 61.00
- 4 Satinder Gupta - Janet Coffin57.33
- 5 Leslie Shafer - Ralph Williams Jr . . .57.28
- 6 Patrice Gordon - Ruth Schrider54.94

Stratum D

18 Pairs

- 1 Franz Delahan - Madeline Delahan . .66.73
- 2 Satinder Gupta - Janet Coffin57.33
- 3 Patrice Gordon - Ruth Schrider54.94
- 4 Jonathan Siegel - Malcolm Stewart . .54.91
- 5 Christopher Miller - KevinJ Barnes . .54.43

299ER PAIRS

Stratum A

11 Pairs

- 1 Katherine Loh - Edward Molnar60.00
- 2 Clifford Dyhouse - Judy Glick58.13
- 3 Marie Siefring - John Mattioli57.81
- 4 John Miles - Gloria Halstead55.73

Stratum B

9 Pairs

- 1 Katherine Loh - Edward Molnar60.00
- 2 Clifford Dyhouse - Judy Glick58.13
- 3 John Miles - Gloria Halstead55.73
- 4 Tracy Kugler - Eric Kugler54.38

SATURDAY 2-SESSION

1ST ANNUAL

**WASHINGTON BRIDGE LEAGUE
CHAMPIONSHIP TROPHY OPEN PAIRS**



30 Pairs Total to a 14 Pair Final

- 1 John Adams - Steve Robinson63.97
- 2 Leo Lasota - Mark Shaw60.60
- 3 John Lawrence - Mita Banerjee60.58
- 4 Donna Rogall - Charity Sack58.97
- 5 Benjamin Brill - Don Probst58.01
- 6 Pam Koester - Carole Geagley53.51

**SATURDAY EVENING
CONSOLATION & OPEN PAIRS**



Stratum A

26 Pairs

- 1 Paul Black - Sam Westgate66.99
- 2 Benjamin Stauss - Bill Gainer62.82
- 3 Helene Bauman - Arnie Frankel62.18
- 4 Richard Ferrin - Eugene Kales59.62
- 5 Michael Richey - Clyde Kruskal54.97
- 6 M Bruce Todd - Fletcher Thompson .52.40

Stratum B

18 Pairs

- 1 Paul Black - Sam Westgate66.99
- 2 Benjamin Stauss - Bill Gainer62.82
- 3 M Bruce Todd - Fletcher Thompson .52.40
- 4 Tom Gallagher - John Lowe III51.92
- 5 Gloria Halstead - Margaret Buda . . .51.60

Stratum C

10 Pairs

- 1 Tom Gallagher - John Lowe III51.92
- 2 Gloria Halstead - Margaret Buda . . .51.60
- 3 Sandra Forsythe - Steven Forsythe . .50.00
- 4 Dale Collinson - Susan Collinson . .49.84

SUNDAY

A/X SWISS TEAMS



Stratum A

16 Teams

- 1 Mita Banerjee - Hanna Schepps - Lloyd Rawley - John Lawrence103.00
- 2 Steve Robinson - Jeff Roman - William Cole - Mark Shaw96.00
- 3 Leo Lasota - Alfred Steinberg - Dan Kasture - Andrew Gofreed86.00
- 4 Jim Houghton - R Eissenstat - Fred King - Richard Wegman81.00
- 5 Richard Ferrin - David Fleischer - Patricia Parker - Eugene Kales77.00

Stratum X

8 Teams

- 1 Lloyd Rawley - John Lawrence - Hanna Schepps - Mita Banerjee103.00
- 2 Hailong Ao - Harry Zhou - Kefu Xu - Weizhong Bao74.00
- 3 Bruce Houston - Robert Hartmann - Steve Bunning - Kristene Miller68.00

B/C SWISS TEAMS

Stratum B

17 Teams

- 1 Christon Johnson - Robert Boorman - Michael Goldman - William Mendez Jr102.00



- 2 Benjamin Stauss - Ronald Susi - Kenneth Berg - Robert Ellis94.00
- 3 David Wakefield - Gregory Mullins - Dan Moore - Ronald Kral80.00
- 4/5 Eugene Fisher - Adrienne Fisher - Paul Krueger - Barbara Summers79.00
- 4/5 Clayton Eisinger - Susie Eisinger - Gretchen Handwerker - David Loken 79.00

Stratum C

6 Teams

- 1 Christon Johnson - Robert Boorman - Michael Goldman - William Mendez Jr102.00
- 2 Richard Allison - John Lowe III - James Andre - Lily Andre71.00

SUNDAY MORNING

299ER SWISS



5 Teams

- 1 Donor Lion - Wanda Avila - Neal McKinney - Kim Ashenden53.00
- 2 Marie Siefiring - Gloria Halstead - Margaret Buda - Robert Von Moss48.00

SUNDAY AFTERNOON

299ER SWISS

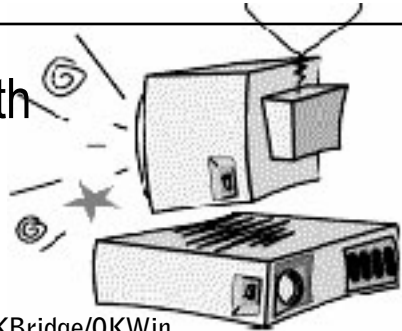


3 Teams

- 1 John Graham - Susan Graham - Michael Henderson - Juan Pardo51.00

Do you get along with your computer?

Help is here!



- Get on the internet
- Computer purchase
- Computer setup
- Email setup
- Software installations
- Programming
- OKBridge/OKWin
- Microsoft Word
- Microsoft Excel/Access
- Web Page Design
- Uploads and Downloads
- Phone support



Diane Walker

dibasoft
 Computer Consulting
 301-990-8534
 diane@dibasoft.com



NLM MASTER POINTERS

by I/N Columnist, Vince Wilmot, vwilmot@erols.com

In this issue, we will focus on responding to 1NT openers. Once partner opens 1NT, she shows 15-17 HCP in a balanced hand. Responder can very accurately determine the combined partnership's assets, and place the final contract. Let's look at some of the tools available to responder:

STAYMAN:

One of the most frequently used conventions is Stayman. When opener bids 1NT, she may or may not have a four card major. It is important to determine if the partnership has an eight card major suit fit. Stayman is a 2♣ response to a 1NT opener. Opener will rebid as follows:

Opener	Responder
1NT	2♣ (Stayman)
?	

Opener's Response to Stayman	Meaning	Opener's Plan
2♦	I have no four card major	Await further direction from partner
2♥	I have four hearts	I may also have four spades. Partner will provide further direction
2♠	I have four spades and don't have four hearts	Await direction from partner.

There are some interesting points to observe in the above table:

1. Opener is always dependent on partner to provide further direction. Opener's hand is very clearly defined to responder. Responder's hand is still a mystery to opener. Responder is the captain of the auction and will direct the partnership to the proper final contract.

2. Without a four card major, bid 2♦. This call is completely artificial. It says nothing about your diamond holding. Partner will recognize this, and act accordingly.

3. With two four card majors, respond in hearts. Partner still has room to show spades if appropriate.

Let's try a couple of examples:

The auction proceeds as follows with you as South:

<u>SOUTH</u>	<u>WEST</u>	<u>NORTH</u>	<u>EAST</u>
1NT	P	2♣	P
?			

Your hands:

A.	B.	C.
♠AK43	♠A76	♠432
♥A32	♥A75	♥AT43
♦Q75	♦KQJ	♦KQJT
♣K98	♣K875	♣AK

A. Bid 2♠. Show your four card major.

B. Bid 2♦. This call is artificial. You are just denying a four card major. The call says nothing about your diamond holding

C. Bid 2♥. This shows four hearts

D.	E.	F.
♠KQJT	♠A2	♠AKQJ
♥AT98	♥6543	♥5432
♦J75	♦AQJ7	♦K54
♣AQ	♣KQ4	♣KJ

D. Bid 2♥. This shows four hearts. You may also have four spades.

E. Bid 2♥. Yes, your heart suit is poor, but you are still obliged to show your four card suit.

F. Bid 2♥. Even though your spades are much better, you should still show your four card heart suit first.

In our next issue, we will focus on how to continue after a 1NT opener, and a 2♣ Stayman response.

VOLUNTEERS WANTED

Steve Forsythe is the new volunteer coordinator for the Washington Bridge League. He's making two lists:

1) Volunteers who might be willing to play with someone who's looking for a partner, and

2) Volunteers who might be willing to play to help out at a sectional. For example, we will need help taking winners pictures at the sectionals after each session. We may need help with hospitality: i.e., baking or shopping. Once Steve has this list, he can just send out an email whenever a need arises.

Please email Steve Forsythe at majslf@aol.com or call him at **301-592-9177** with the following information:

- (a) name, email, phone,
- (b) volunteer to help (Y/N),
- (c) volunteer to be a partner (Y/N)

This is a great opportunity to meet people, make new partnerships, and have fun! You can volunteer to help, or be a partner, or both. He's not asking you to commit to anything specific yet, and you can always say no. So please consider adding your name to our database of people who would like to hear from us when we need a little help.

Thanks!

STEPPING UP TO NEW HEIGHTS

As of December 1, 2003

Junior Masters (5 Masterpoints)

Ruby C. Brooks Hall H. Sisson
Galia Steinbach

Club Masters (20 Masterpoints)

Herman Pflucker
Helen Walker Winnie Yonkers

Sectional Masters (50 Masterpoints)

Jean L. Donnell Ms. Lee Tanen

Regional Masters (100 Masterpoints)

James P. Davenport, Jr
Erez Hendelman Timothy D. Stewart

NABC Masters (200 Masterpoints)

Wanda Avila Janet Berman
Shirley B. Coll Cynthia R. Helms
Arthur D Olson

AREA BRIDGE CLASS OFFERINGS

LESLIE SHAFER'S CLASSES

Winter 2004

Open to the Public through Mont. Co. Rec. Dept:

Starting January 5th — Monday 10 am - noon: Killer Defense. Learn how to defend against NT contracts. Using attitude and count signals to your partner can be a lot of fun for you and your partner! Learn how to devastate your opponents at the bridge table!! 8 weeks. Cost \$68 plus \$15 material fee. **Potomac Com. Center**

Starting January 7th — Wednesday 7:30 - 9:30 pm: Advanced Beginner Bridge. Let's learn some additional bidding tools such as preempts, takeout doubles, weak 2's strong hand bidding, overcalls, and more. 8 weeks. Cost \$68 plus \$15 material fee. **Leland Com. Center** (This class also being offered through OASIS, a senior organization run out of the Lord and Taylor store on Western Ave., NW. If you are over 55, you may register for this class. \$120)

At the Bethesda Country Club — 3 different classes. You must be a member of this club or know a member who can sign you up as their guest to attend any of the following classes: **Jan. 13th Tuesday 7 - 9 pm Slam Bidding for Advanced Students** (covers, Blackwood, Gerber, control-bids and more). **Jan. 14th Wednesday 1-3 pm Advanced Beginners** (covers overcalls, preempts, takeout doubles and more). **Jan. 15th Thursdays 7-9 pm Beginner Bridge** (a basic beginner class). Costs will be based on number of participants.

If you would like to register for any of these classes, please contact Leslie. Her email address has changed so please take special note: slamhand@verizon.net.

THE WASHINGTON BRIDGE LEAGUE
 14517 PERRYWOOD DRIVE
 BURTONSVILLE, MARYLAND 20866

Periodicals
 Postage Paid
 at Burtonsville, MD

**NVBA WILLIAM POISSANT
 MEMORIAL TOURNAMENT**



Knights of Columbus Hall (KOCH)
 5115 Little Falls Road, Arlington, VA ♦ 703-536-9656
CHECK OUR NEW STARTING TIMES CAREFULLY

THURSDAY, FEBRUARY 19 *Note: For Thursday only, the Virginia site is Beth El*

*Beth El Hebrew Congregation, 3830 Seminary Rd., Arlington, VA (NVBA)
 Christ the King Church, one block south of East-West Highway on Colston
 between Washington and Grubb, Chevy Chase, MD (WBL)*

NVBA (Beth El) WBL

STRATAFLIGHTED PAIRS (A/X=3000+/3000; B/C=2000/750) 7:00 p.m. 7:30 p.m.
299ER PAIRS (300/200/100) 7:00 p.m.	
199ER PAIRS (200/100/50) 7:30 p.m.	

...REST OF TOURNAMENT AT KOCH...

FRIDAY, FEBRUARY 20

STRATIFIED OPEN PAIRS (2000+/2000/750) 2:00 p.m.
299ER PAIRS (0-300) 2:00 p.m.
MINI-STRATIFIED PAIRS (100/50/20) 2:00 p.m.
STRATIFIED OPEN PAIRS (2000+/2000/750) 7:30 p.m.
INTERMEDIATE STRATIFIED PAIRS (300/200/100/50)	... 7:30 p.m.

SATURDAY, FEBRUARY 21

STRATIFIED OPEN PAIRS (2000+/2000/750) 9:30 a.m.
STRATIFIED SENIOR PAIRS (2000+/2000/750) 9:30 a.m.
MINI-STRATIFIED PAIRS (100/50/20) 9:30 a.m.
TROPHY EVENT: WILLIAM POISSANT MEMORIAL PAIRS	

(2 SESSIONS – Qualifying And Final) 2:00 p.m. and 7:30 p.m.

STRATIFIED SINGLE SESSION SIDE GAME (1000+/1000)	.. 2:00 p.m.
STRATIFIED SENIOR PAIRS (2000+/2000/750) 2:00 p.m.
299ER PAIRS (0-300) 2:00 p.m.
MINI-STRATIFIED PAIRS (100/50/20) 2:00 p.m.
EASYBRIDGE! PAIRS (20/5) 2:00 p.m.
STRATIFIED OPEN CONSOLATION (2000+/2000/750)	... 7:30 p.m.
INTERMEDIATE STRATIFIED PAIRS (300/200/100/50)	... 7:30 p.m.

SUNDAY, FEBRUARY 22

***Novice/Intermediate Lecture (Jeff Roman) 10:15 a.m. ***

FLIGHT A/X BOARD-A-MATCH TEAMS (3000+/3000)	... 11:00 a.m.
FLIGHT B/C SWISS TEAMS (2000/750) 11:00 a.m.

Both BAM and Swiss are 2-session events, w/1 30-minute break—box lunch available

299ER SWISS TEAMS (0-300; Single session) 11:00 a.m.
MINI-STRATIFIED SWISS TEAMS (100/50/20; Single session)	.. 11:00 a.m.
STRATIFIED 299ER SWISS TEAMS (300/200/100; Single session)	... 3:15 p.m.

DIRECTIONS: From Rte. 495 (the Beltway) or points West of the Beltway, take Rte. 66 East to the Washington Boulevard/Lee Highway exit. At the light at the end of the exit ramp, turn left onto Lee Highway. Go approximately 1.5 miles and turn left onto Harrison Street. Go .5 miles and turn right onto Little Falls Road. The KOCH is on your left. 2 of a mile down Little Falls. From D.C. or Arlington, take Rte. 66 West to the Sycamore Street exit. At the end of the exit ramp, turn right onto Sycamore. At the second light, turn right onto Lee Highway and go a little over 1 mile and turn left onto Harrison Street. Follow the above directions from that point. OR from D.C. go straight across Chain Bridge and then keep left to stay on Glebe Road. From the light at the end of Chain Bridge, proceed 1.8 miles and turn right onto Little Falls Road (the second right past the light at Williamsburg Blvd.). Cross Old Dominion (3 miles) at the stop sign and proceed on Little Falls another .3 miles to the KOCH on your right. From all directions, turn up the drive and circle past the stone lodge. Follow signs for visitor parking. The tournament will be held in the brick building marked "KOCH 2473" down the hill to your right.

Mid-Chart

**Conventions permitted
 in all Flight A, Flight B,
 & Open Stratified Events**

*Free Snacks Every Session
 Snack Bar On-Site to
 Provide Reasonably-Priced
 Sandwiches, Hot Dogs,
 Fruit, Cookies, Coffee,
 Sodas, Wine, and Beer*

Tournament Chairs
*Margot Hennings,
 703-560-0245
 Kathryn Kiley,
 703-758-0366*

Partnership Chair
*Pete Hughes,
 703-768-4083
 On-line Partnership
 "Desk" on www.nvba.org*

**Next NVBA
 Sectional Tournament:
 April 22-25,
 2004**